

VOLTAGE  
REGULATORS  
CROSS  
REFERENCE  
GUIDE



**SGS-THOMSON**  
MICROELECTRONICS



# CONTENTS

**SANYO** 3

**MOTOROLA** 6

**NATIONAL** 11

**TEXAS INSTRUMENTS** 16


**TOSHIBA** 21

**SAMSUNG** 26


**LINEAR TECHNOLOGY** 31

**TOKO** 32

# SANYO to ST

Vol. Reg. Description	Tj °C	Iout A	Tol. %	Package	SANYO	
5V LOW DROP	-40 to 150	1.5	2	TO-220		L4940V5
8.5V LOW DROP	-40 to 150	1.5	2	TO-220		L4940V85
10V LOW DROP	-40 to 150	1.5	2	TO-220		L4940V10
12V LOW DROP	-40 to 150	1.5	2	TO-220		L4940V12
5V LOW DROP	-40 to 150	1.0	4	DPAK		L4941BDT
5V LOW DROP	-40 to 150	1.0	4	SOT-194		L4941BS
5V LOW DROP	-40 to 150	1.0	4	TO-220		L4941BV
5V LOW DROP	-40 to 150	1.0	4	SOT-82		L4941BX
FIXED 5V	-40 to 125	1.5	2	TO-220		L7805ABV
FIXED 5V	0 to 125	1.5	2	TO-220		L7805ACV
FIXED 5V	0 to 125	1.5	4	ISOWATT220	L7805ML	L7805CP
FIXED 5V	0 to 125	1.5	4	TO-3		L7805CT
FIXED 5V	0 to 125	1.5	4	TO-220	L7805	L7805CV
FIXED 5.2V	0 to 125	1.5	4	ISOWATT220		L7852CV
FIXED 6V	-40 to 125	1.5	2	TO-220		L7806ABV
FIXED 6V	0 to 125	1.5	2	TO-220		L7806ACV
FIXED 6V	0 to 125	1.5	4	ISOWATT220	L7806ML	L7806CP
FIXED 6V	0 to 125	1.5	4	TO-3		L7806CT
FIXED 6V	0 to 125	1.5	4	TO-220	L7806	L7806CV
FIXED 8V	-40 to 125	1.5	2	TO-220		L7808ABV
FIXED 8V	0 to 125	1.5	2	TO-220		L7808ACV
FIXED 8V	0 to 125	1.5	4	ISOWATT220	L7808ML	L7808CP
FIXED 8V	0 to 125	1.5	4	TO-3		L7808CT
FIXED 8V	0 to 125	1.5	4	TO-220	L7808	L7808CV
FIXED 8.5V	0 to 125	1.5	4	TO-3		L7885CT
FIXED 8.5V	0 to 125	1.5	4	TO-220		L7885CV
FIXED 9V	-40 to 125	1.5	2	TO-220		L7809ABV
FIXED 9V	0 to 125	1.5	2	TO-220		L7809ACV
FIXED 9V	0 to 125	1.5	4	ISOWATT220	L7809ML	L7809CP
FIXED 9V	0 to 125	1.5	4	TO-3		L7809CT
FIXED 9V	0 to 125	1.5	4	TO-220	L7809	L7809CV
FIXED 12V	-40 to 125	1.5	2	TO-220		L7812ABV
FIXED 12V	0 to 125	1.5	2	TO-220		L7812ACV
FIXED 12V	0 to 125	1.5	4	ISOWATT220	L7812ML	L7812CP
FIXED 12V	0 to 125	1.5	4	TO-3		L7812CT
FIXED 12V	0 to 125	1.5	4	TO-220	L7812	L7812CV
FIXED 15V	-40 to 125	1.5	2	TO-220		L7815ABV
FIXED 15V	0 to 125	1.5	2	TO-220		L7815ACV
FIXED 15V	0 to 125	1.5	4	ISOWATT220	L7812ML	L7815CP
FIXED 15V	0 to 125	1.5	4	TO-3		L7815CT
FIXED 15V	0 to 125	1.5	4	TO-220	L7815	L7815CV
FIXED 18V	-40 to 125	1.5	2	TO-220		L7818ABV
FIXED 18V	0 to 125	1.5	2	TO-220		L7818ACV
FIXED 18V	0 to 125	1.5	4	ISOWATT220		L7818CP
FIXED 18V	0 to 125	1.5	4	TO-3		L7818CT
FIXED 18V	0 to 125	1.5	4	TO-220	L7818	L7818CV
FIXED 20V	-40 to 125	1.5	2	TO-220		L7820ABV
FIXED 20V	0 to 125	1.5	2	TO-220		L7820ACV
FIXED 20V	0 to 125	1.5	4	ISOWATT220		L7820CP
FIXED 20V	0 to 125	1.5	4	TO-220	L7820	L7820C-T
FIXED 20V	0 to 125	1.5	4	TO-220	L7820	L7820CV
FIXED 24V	-40 to 125	1.5	2	TO-220		L7824ABV
FIXED 24V	0 to 125	1.5	2	TO-220		L7824ACV
FIXED 24V	0 to 125	1.5	4	ISOWATT220		L7824CP
FIXED 24V	0 to 125	1.5	4	TO-3		L7824CT
FIXED 24V	0 to 125	1.5	4	TO-220	L7824	L7824CV
FIXED 3.3V	0 to 125	0.1	4	SO-8		L78L33ACD
FIXED 3.3V	0 to 125	0.1	4	TO-92		L78L33ACZ
FIXED 5V	-40 to 125	0.1	4	SO-8		L78L05ABD
FIXED 5V	-40 to 125	0.1	4	TO-92		L78L05ABZ
FIXED 5V	0 to 125	0.1	4	SO-8		L78L05ACD
FIXED 5V	0 to 125	0.1	4	TO-92		L78L05ACZ
FIXED 5V	0 to 125	0.1	8	SO-8		L78L05CD
FIXED 6V	-40 to 125	0.1	4	SO-8		L78L06ABD
FIXED 6V	-40 to 125	0.1	4	TO-92		L78L06ABZ
FIXED 6V	0 to 125	0.1	4	SO-8		L78L06ACD
FIXED 6V	0 to 125	0.1	4	TO-92		L78L06ACZ

# SANYO to ST

Vol. Reg. Description	Tj °C	Iout A	Tol. %	Package	SANYO	
FIXED 6V	0 to 125	0.1	8	SO-8		L78L06CD
FIXED 8V	-40 to 125	0.1	4	SO-8		L78L08ABD
FIXED 8V	-40 to 125	0.1	4	TO-92		L78L08ABZ
FIXED 8V	0 to 125	0.1	4	SO-8		L78L08ACD
FIXED 8V	0 to 125	0.1	4	TO-92		L78L08ACZ
FIXED 8V	0 to 125	0.1	8	SO-8		L78L08CD
FIXED 9V	-40 to 125	0.1	4	SO-8		L78L09ABD
FIXED 9V	-40 to 125	0.1	4	TO-92		L78L09ABZ
FIXED 9V	0 to 125	0.1	4	SO-8		L78L09ACD
FIXED 9V	0 to 125	0.1	4	TO-92		L78L09ACZ
FIXED 9V	0 to 125	0.1	8	SO-8		L78L09CD
FIXED 12V	-40 to 125	0.1	4	SO-8		L78L12ABD
FIXED 12V	-40 to 125	0.1	4	TO-92		L78L12ABZ
FIXED 12V	0 to 125	0.1	4	SO-8		L78L12ACD
FIXED 12V	0 to 125	0.1	4	TO-92		L78L12ACZ
FIXED 12V	0 to 125	0.1	8	SO-8		L78L12CD
FIXED 15V	-40 to 125	0.1	4	SO-8		L78L15ABD
FIXED 15V	-40 to 125	0.1	4	TO-92		L78L15ABZ
FIXED 15V	0 to 125	0.1	4	SO-8		L78L15ACD
FIXED 15V	0 to 125	0.1	4	TO-92		L78L15ACZ
FIXED 15V	0 to 125	0.1	8	SO-8		L78L15CD
FIXED 18V	-40 to 125	0.1	4	SO-8		L78L18ABD
FIXED 18V	-40 to 125	0.1	4	TO-92		L78L18ABZ
FIXED 18V	0 to 125	0.1	4	SO-8		L78L18ACD
FIXED 18V	0 to 125	0.1	4	TO-92		L78L18ACZ
FIXED 18V	0 to 125	0.1	8	SO-8		L78L18CD
FIXED 24V	-40 to 125	0.1	4	SO-8		L78L24ABD
FIXED 24V	-40 to 125	0.1	4	TO-92		L78L24ABZ
FIXED 24V	0 to 125	0.1	4	SO-8		L78L24ACD
FIXED 24V	0 to 125	0.1	4	TO-92		L78L24ACZ
FIXED 24V	0 to 125	0.1	8	SO-8		L78L24CD
FIXED 24V	0 to 125	0.1	8	TO-92		L78L24ACZ
FIXED 5V	-40 to 125	0.5	2	DPAK		L78M05ABDT
FIXED 5V	-40 to 125	0.5	2	SOT-194		L78M05ABS
FIXED 5V	-40 to 125	0.5	2	TO-220		L78M05ABV
FIXED 5V	-40 to 125	0.5	2	SOT-82		L78M05ABX
FIXED 5V	0 to 125	0.5	2	DPAK		L78M05ACDT
FIXED 5V	0 to 125	0.5	2	SOT-194		L78M05ACS
FIXED 5V	0 to 125	0.5	4	DPAK	L78M05T	L78M05CDT
FIXED 5V	0 to 125	0.5	4	ISOWATT220	L78M05ML	L78M05CP
FIXED 5V	0 to 125	0.5	4	SOT-194		L78M05CS
FIXED 5V	0 to 125	0.5	4	TO-220	L78M05	L78M05CV
FIXED 5V	0 to 125	0.5	4	SOT-82		L78M05CX
FIXED 6V	-40 to 125	0.5	2	DPAK		L78M06ABDT
FIXED 6V	-40 to 125	0.5	2	SOT-194		L78M06ABS
FIXED 6V	-40 to 125	0.5	2	TO-220		L78M06ABV
FIXED 6V	0 to 125	0.5	2	DPAK	L78M06T	L78M06ACDT
FIXED 6V	0 to 125	0.5	4	DPAK	L78M06T	L78M06CDT
FIXED 6V	0 to 125	0.5	4	ISOWATT220	L78M06ML	L78M06CP
FIXED 6V	0 to 125	0.5	4	SOT-194		L78M06CS
FIXED 6V	0 to 125	0.5	4	TO-220	L78M06	L78M06CV
FIXED 6V	0 to 125	0.5	4	SOT-82		L78M06CX
FIXED 8V	-40 to 125	0.5	2	DPAK		L78M08ABDT
FIXED 8V	-40 to 125	0.5	2	SOT-194		L78M08ABS
FIXED 8V	-40 to 125	0.5	2	TO-220		L78M08ABV
FIXED 8V	0 to 125	0.5	2	DPAK	L78M08T	L78M08ACDT
FIXED 8V	0 to 125	0.5	4	DPAK	L78M08T	L78M08CDT
FIXED 8V	0 to 125	0.5	4	ISOWATT220	L78M08ML	L78M08CP
FIXED 8V	0 to 125	0.5	4	SOT-194		L78M08CS
FIXED 8V	0 to 125	0.5	4	TO-220	L78M08	L78M08CV
FIXED 8V	0 to 125	0.5	4	SOT-82		L78M08CX
FIXED 9V	-40 to 125	0.5	2	DPAK		L78M09ABDT
FIXED 9V	-40 to 125	0.5	2	TO-220		L78M09ABV
FIXED 9V	0 to 125	0.5	2	DPAK		L78M09ACDT
FIXED 9V	0 to 125	0.5	4	DPAK	L78M09T	L78M09CDT
FIXED 9V	0 to 125	0.5	4	ISOWATT220	L78M09ML	L78M09CP
FIXED 9V	0 to 125	0.5	4	SOT-194		L78M09CS

# SANYO to ST

Vol. Reg. Description	Tj °C	Iout A	Tol. %	Package	SANYO	ST
FIXED 9V	0 to 125	0.5	4	TO-220	L78M09	L78M09CV
FIXED 9V	0 to 125	0.5	4	SOT-82		L78M09CX
FIXED 10V	-40 to 125	0.5	2	DPAK		L78M10ABDT
FIXED 10V	-40 to 125	0.5	2	TO-220		L78M10ABV
FIXED 10V	0 to 125	0.5	2	DPAK		L78M10ACDT
FIXED 10V	0 to 125	0.5	4	DPAK	L78M10T	L78M10CDT
FIXED 10V	0 to 125	0.5	4	ISOWATT220	L78M10ML	L78M10CP
FIXED 10V	0 to 125	0.5	4	SOT-194		L78M10CS
FIXED 10V	0 to 125	0.5	4	TO-220	L78M10	L78M10CV
FIXED 10V	0 to 125	0.5	4	SOT-82		L78M10CX
FIXED 12V	-40 to 125	0.5	2	DPAK		L78M12ABDT
FIXED 12V	-40 to 125	0.5	2	SOT-194		L78M12ABS
FIXED 12V	-40 to 125	0.5	2	TO-220		L78M12ABV
FIXED 12V	0 to 125	0.5	2	DPAK		L78M12ACDT
FIXED 12V	0 to 125	0.5	4	DPAK	L78M12T	L78M12CDT
FIXED 12V	0 to 125	0.5	4	ISOWATT220	L78M12ML	L78M12CP
FIXED 12V	0 to 125	0.5	4	SOT-194		L78M12CS
FIXED 12V	0 to 125	0.5	4	TO-220	L78M12	L78M12CV
FIXED 12V	0 to 125	0.5	4	SOT-82		L78M12CX
FIXED 15V	-40 to 125	0.5	2	DPAK		L78M15ABDT
FIXED 15V	-40 to 125	0.5	2	TO-220		L78M15ABV
FIXED 15V	0 to 125	0.5	2	DPAK		L78M15ACDT
FIXED 15V	0 to 125	0.5	4	DPAK	L78M15T	L78M15CDT
FIXED 15V	0 to 125	0.5	4	ISOWATT220	L78M15ML	L78M15CP
FIXED 15V	0 to 125	0.5	4	SOT-194		L78M15CS
FIXED 15V	0 to 125	0.5	4	TO-220	L78M15	L78M15CV
FIXED 15V	0 to 125	0.5	4	SOT-82		L78M15CX
FIXED 18V	-40 to 125	0.5	2	DPAK		L78M18ABDT
FIXED 18V	-40 to 125	0.5	2	TO-220		L78M18ABV
FIXED 18V	0 to 125	0.5	2	DPAK	L78M18T	L78M18ACDT
FIXED 18V	0 to 125	0.5	4	DPAK	L78M18T	L78M18CDT
FIXED 18V	0 to 125	0.5	4	ISOWATT220	L78M18ML	L78M18CP
FIXED 18V	0 to 125	0.5	4	SOT-194		L78M18CS
FIXED 18V	0 to 125	0.5	4	TO-220	L78M18	L78M18CV
FIXED 18V	0 to 125	0.5	4	SOT-82		L78M18CX
FIXED 20V	-40 to 125	0.5	2	DPAK		L78M20ABDT
FIXED 20V	-40 to 125	0.5	2	TO-220		L78M20ABV
FIXED 20V	0 to 125	0.5	2	DPAK		L78M20ACDT
FIXED 20V	0 to 125	0.5	4	DPAK	L78M20T	L78M20CDT
FIXED 20V	0 to 125	0.5	4	ISOWATT220	L78M20ML	L78M20CP
FIXED 20V	0 to 125	0.5	4	SOT-194		L78M20CS
FIXED 20V	0 to 125	0.5	4	TO-220	L78M20	L78M20CV
FIXED 20V	0 to 125	0.5	4	SOT-82		L78M20CX
FIXED 24V	-40 to 125	0.5	2	DPAK		L78M24ABDT
FIXED 24V	-40 to 125	0.5	2	TO-220		L78M24ABV
FIXED 24V	0 to 125	0.5	2	DPAK		L78M24ACDT
FIXED 24V	0 to 125	0.5	4	DPAK	L78M24T	L78M24CDT
FIXED 24V	0 to 125	0.5	4	ISOWATT220	L78M24ML	L78M24CP
FIXED 24V	0 to 125	0.5	4	SOT-194		L78M24CS
FIXED 24V	0 to 125	0.5	4	TO-220	L78M24	L78M24CV
FIXED 24V	0 to 125	0.5	4	SOT-82		L78M24CX
FIXED 5V	0 to 150	2.0	4	TO-3		L78S05CT
FIXED 5V	0 to 150	2.0	4	TO-220		L78S05CV
FIXED 7.5V	0 to 150	2.0	4	TO-3		L78S75CT
FIXED 7.5V	0 to 150	2.0	4	TO-220		L78S75CV
FIXED 9V	0 to 150	2.0	4	TO-3		L78S09CT
FIXED 9V	0 to 150	2.0	4	TO-220		L78S09CV
FIXED 10V	0 to 150	2.0	4	TO-3		L78S10CT
FIXED 10V	0 to 150	2.0	4	TO-220		L78S10CV
FIXED 12V	0 to 150	2.0	4	TO-3		L78S12CT
FIXED 12V	0 to 150	2.0	4	TO-220		L78S12CV
FIXED 15V	0 to 150	2.0	4	TO-3		L78S15CT
FIXED 15V	0 to 150	2.0	4	TO-220		L78S15CV
FIXED 18V	0 to 150	2.0	4	TO-3		L78S18CT
FIXED 18V	0 to 150	2.0	4	TO-220		L78S18CV
FIXED 24V	0 to 150	2.0	4	TO-3		L78S24CT
FIXED 24V	0 to 150	2.0	4	TO-220		L78S24CV




# MOTOROLA to ST

Vol. Reg. Description	Tj °C	Iout A	Tol. %	Package	MOTOROLA	ST
5V LOW DROP	-40 to 150	1.5	2	TO-220		L4940V5
8.5V LOW DROP	-40 to 150	1.5	2	TO-220		L4940V85
10V LOW DROP	-40 to 150	1.5	2	TO-220		L4940V10
12V LOW DROP	-40 to 150	1.5	2	TO-220		L4940V12
5V LOW DROP	-40 to 150	1.0	4	DPAK		L4941BDT
5V LOW DROP	-40 to 150	1.0	4	SOT-194		L4941BS
5V LOW DROP	-40 to 150	1.0	4	TO-220		L4941BV
5V LOW DROP	-40 to 150	1.0	4	SOT-82		L4941BX
FIXED 5V	-40 to 125	1.5	2	TO-220		L7805ABV
FIXED 5V	0 to 125	1.5	2	TO-220	MC7805ACT	L7805ACV
FIXED 5V	0 to 125	1.5	4	ISOWATT220		L7805CP
FIXED 5V	0 to 125	1.5	4	TO-3	MC7805CK	L7805CT
FIXED 5V	0 to 125	1.5	4	TO-220	MC7805CT	L7805CV
FIXED 5.2V	0 to 125	1.5	4	ISOWATT220		L7852CV
FIXED 6V	-40 to 125	1.5	2	TO-220		L7806ABV
FIXED 6V	0 to 125	1.5	2	TO-220	MC7806ACT	L7806ACV
FIXED 6V	0 to 125	1.5	4	ISOWATT220		L7806CP
FIXED 6V	0 to 125	1.5	4	TO-3	MC7806CK	L7806CT
FIXED 6V	0 to 125	1.5	4	TO-220	MC7806CT	L7806CV
FIXED 8V	-40 to 125	1.5	2	TO-220		L7808ABV
FIXED 8V	0 to 125	1.5	2	TO-220	MC7808ACT	L7808ACV
FIXED 8V	0 to 125	1.5	4	ISOWATT220		L7808CP
FIXED 8V	0 to 125	1.5	4	TO-3	MC7808CK	L7808CT
FIXED 8V	0 to 125	1.5	4	TO-220	MC7808CT	L7808CV
FIXED 8.5V	0 to 125	1.5	4	TO-3		L7885CT
FIXED 8.5V	0 to 125	1.5	4	TO-220		L7885CV
FIXED 9V	-40 to 125	1.5	2	TO-220		L7809ABV
FIXED 9V	0 to 125	1.5	2	TO-220	MC7809ACT	L7809ACV
FIXED 9V	0 to 125	1.5	4	ISOWATT220		L7809CP
FIXED 9V	0 to 125	1.5	4	TO-3		L7809CT
FIXED 9V	0 to 125	1.5	4	TO-220	MC7809CT	L7809CV
FIXED 12V	-40 to 125	1.5	2	TO-220		L7812ABV
FIXED 12V	0 to 125	1.5	2	TO-220	MC7812ACT	L7812ACV
FIXED 12V	0 to 125	1.5	4	ISOWATT220		L7812CP
FIXED 12V	0 to 125	1.5	4	TO-3	MC7812CK	L7812CT
FIXED 12V	0 to 125	1.5	4	TO-220	MC7812CT	L7812CV
FIXED 15V	-40 to 125	1.5	2	TO-220		L7815ABV
FIXED 15V	0 to 125	1.5	2	TO-220	MC7815ACT	L7815ACV
FIXED 15V	0 to 125	1.5	4	ISOWATT220		L7815CP
FIXED 15V	0 to 125	1.5	4	TO-3	MC7815CK	L7815CT
FIXED 15V	0 to 125	1.5	4	TO-220	MC7815CT	L7815CV
FIXED 18V	-40 to 125	1.5	2	TO-220		L7818ABV
FIXED 18V	0 to 125	1.5	2	TO-220	MC7818ACT	L7818ACV
FIXED 18V	0 to 125	1.5	4	ISOWATT220		L7818CP
FIXED 18V	0 to 125	1.5	4	TO-3	MC7818CK	L7818CT
FIXED 18V	0 to 125	1.5	4	TO-220	MC7818CT	L7818CV
FIXED 20V	-40 to 125	1.5	2	TO-220		L7820ABV
FIXED 20V	0 to 125	1.5	2	TO-220		L7820ACV
FIXED 20V	0 to 125	1.5	4	ISOWATT220		L7820CP
FIXED 20V	0 to 125	1.5	4	TO-220		L7820C-T
FIXED 20V	0 to 125	1.5	4	TO-220		L7820CV
FIXED 24V	-40 to 125	1.5	2	TO-220		L7824AB
FIXED 24V	0 to 125	1.5	2	TO-220	MC7824ACT	L7824ACV
FIXED 24V	0 to 125	1.5	4	ISOWATT220		L7824CP
FIXED 24V	0 to 125	1.5	4	TO-3	MC7824CK	L7824CT
FIXED 24V	0 to 125	1.5	4	TO-220	MC7824CT	L7824CV
FIXED 3.3V	0 to 125	0.1	4	SO-8		L78L33ACD
FIXED 3.3V	0 to 125	0.1	4	TO-92		L78L33ACZ
FIXED 5V	-40 to 125	0.1	4	SO-8	MC78L05ACD	L78L05ABD
FIXED 5V	-40 to 125	0.1	4	TO-92	MC78L05ACP	L78L05ABZ
FIXED 5V	0 to 125	0.1	4	SO-8	MC78L05ACD	L78L05ACD
FIXED 5V	0 to 125	0.1	4	TO-92	MC78L05ACP	L78L05ACZ
FIXED 5V	0 to 125	0.1	8	SO-8	MC78L05ACD	L78L05CD
FIXED 6V	-40 to 125	0.1	4	SO-8		L78L06ABD
FIXED 6V	-40 to 125	0.1	4	TO-92		L78L06ABZ
FIXED 6V	0 to 125	0.1	4	SO-8		L78L06ACD
FIXED 6V	0 to 125	0.1	4	TO-92		L78L06ACZ

# MOTOROLA to ST


Vol. Reg. Description	Tj °C	Iout A	Tol. %	Package	MOTOROLA	ST
FIXED 6V	0 to 125	0.1	8	SO-8		L78L06CD
FIXED 8V	-40 to 125	0.1	4	SO-8	MC78L08ACD	L78L08ABD
FIXED 8V	-40 to 125	0.1	4	TO-92	MC78L08ACP	L78L08ABZ
FIXED 8V	0 to 125	0.1	4	SO-8	MC78L08ACD	L78L08ACD
FIXED 8V	0 to 125	0.1	4	TO-92	MC78L08ACP	L78L08ACZ
FIXED 8V	0 to 125	0.1	8	SO-8	MC78L08ACD	L78L08CD
FIXED 9V	-40 to 125	0.1	4	SO-8		L78L09ABD
FIXED 9V	-40 to 125	0.1	4	TO-92		L78L09ABZ
FIXED 9V	0 to 125	0.1	4	SO-8		L78L09ACD
FIXED 9V	0 to 125	0.1	4	TO-92		L78L09ACZ
FIXED 9V	0 to 125	0.1	8	SO-8		L78L09CD
FIXED 12V	-40 to 125	0.1	4	SO-8	MC78L12ACD	L78L12ABD
FIXED 12V	-40 to 125	0.1	4	TO-92	MC78L12ACP	L78L12ABZ
FIXED 12V	0 to 125	0.1	4	SO-8	MC78L12ACD	L78L12ACD
FIXED 12V	0 to 125	0.1	4	TO-92	MC78L12ACP	L78L12ACZ
FIXED 12V	0 to 125	0.1	8	SO-8	MC78L12ACD	L78L12CD
FIXED 15V	-40 to 125	0.1	4	SO-8	MC78L15ACD	L78L15ABD
FIXED 15V	-40 to 125	0.1	4	TO-92	MC78L15ACP	L78L15ABZ
FIXED 15V	0 to 125	0.1	4	SO-8	MC78L15ACD	L78L15ACD
FIXED 15V	0 to 125	0.1	4	TO-92	MC78L15ACP	L78L15ACZ
FIXED 15V	0 to 125	0.1	8	SO-8	MC78L15ACD	L78L15CD
FIXED 18V	-40 to 125	0.1	4	SO-8	MC78L18ACD	L78L18ABD
FIXED 18V	-40 to 125	0.1	4	TO-92	MC78L18ACP	L78L18ABZ
FIXED 18V	0 to 125	0.1	4	SO-8	MC78L18ACD	L78L18ACD
FIXED 18V	0 to 125	0.1	4	TO-92	MC78L18ACP	L78L18ACZ
FIXED 18V	0 to 125	0.1	8	SO-8	MC78L18CD	L78L18CD
FIXED 24V	-40 to 125	0.1	4	SO-8	MC78L24ACD	L78L24ABD
FIXED 24V	-40 to 125	0.1	4	TO-92	MC78L24ACP	L78L24ABZ
FIXED 24V	0 to 125	0.1	4	SO-8	MC78L24ACD	L78L24ACD
FIXED 24V	0 to 125	0.1	4	TO-92	MC78L24ACP	L78L24ACZ
FIXED 24V	0 to 125	0.1	8	SO-8	MC78L24CD	L78L24CD
FIXED 24V	0 to 125	0.1	8	TO-92	MC78L24CD	L78L24CDZ
FIXED 5V	-40 to 125	0.5	2	DPAK	MC78M05BDT	L78M05ABDT
FIXED 5V	-40 to 125	0.5	2	SOT-194		L78M05ABS
FIXED 5V	-40 to 125	0.5	2	TO-220	MC78M05BT	L78M05ABV
FIXED 5V	-40 to 125	0.5	2	SOT-82		L78M05ABX
FIXED 5V	0 to 125	0.5	2	DPAK		L78M05ACDT
FIXED 5V	0 to 125	0.5	2	SOT-194		L78M05ACS
FIXED 5V	0 to 125	0.5	4	DPAK	MC78M05CDT	L78M05CDT
FIXED 5V	0 to 125	0.5	4	ISOWATT220		L78M05CP
FIXED 5V	0 to 125	0.5	4	SOT-194		L78M05CS
FIXED 5V	0 to 125	0.5	4	TO-220	MC78M05CT	L78M05CV
FIXED 5V	0 to 125	0.5	4	SOT-82		L78M05CX
FIXED 6V	-40 to 125	0.5	2	DPAK	MC78M06BDT	L78M06ABDT
FIXED 6V	-40 to 125	0.5	2	SOT-194		L78M06ABS
FIXED 6V	-40 to 125	0.5	2	TO-220	MC78M06BT	L78M06ABV
FIXED 6V	0 to 125	0.5	2	DPAK		L78M06ACDT
FIXED 6V	0 to 125	0.5	4	DPAK	MC78M06CDT	L78M06CDT
FIXED 6V	0 to 125	0.5	4	ISOWATT220		L78M06CP
FIXED 6V	0 to 125	0.5	4	SOT-194		L78M06CS
FIXED 6V	0 to 125	0.5	4	TO-220	MC78M06CT	L78M06CV
FIXED 6V	0 to 125	0.5	4	SOT-82		L78M06CX
FIXED 8V	-40 to 125	0.5	2	DPAK	MC78M08BDT	L78M08ABDT
FIXED 8V	-40 to 125	0.5	2	SOT-194		L78M08ABS
FIXED 8V	-40 to 125	0.5	2	TO-220	MC78M08BT	L78M08ABV
FIXED 8V	0 to 125	0.5	2	DPAK		L78M08ACDT
FIXED 8V	0 to 125	0.5	4	DPAK	MC78M08CDT	L78M08CDT
FIXED 8V	0 to 125	0.5	4	ISOWATT220		L78M08CP
FIXED 8V	0 to 125	0.5	4	SOT-194		L78M08CS
FIXED 8V	0 to 125	0.5	4	TO-220	MC78M08CT	L78M08CV
FIXED 8V	0 to 125	0.5	4	SOT-82		L78M08CX
FIXED 9V	-40 to 125	0.5	2	DPAK		L78M09ABDT
FIXED 9V	-40 to 125	0.5	2	TO-220		L78M09ABV
FIXED 9V	0 to 125	0.5	2	DPAK		L78M09ACDT
FIXED 9V	0 to 125	0.5	4	DPAK		L78M09CDT
FIXED 9V	0 to 125	0.5	4	ISOWATT220		L78M09CP
FIXED 9V	0 to 125	0.5	4	SOT-194		L78M09CS

# MOTOROLA to ST

Vol. Reg. Description	Tj °C	Iout A	Tol. %	Package	MOTOROLA	
FIXED 9V	0 to 125	0.5	4	TO-220		L78M09CV
FIXED 9V	0 to 125	0.5	4	SOT-82		L78M09CX
FIXED 10V	-40 to 125	0.5	2	DPAK		L78M10ABDT
FIXED 10V	-40 to 125	0.5	2	TO-220		L78M10ABV
FIXED 10V	0 to 125	0.5	2	DPAK		L78M10ACDT
FIXED 10V	0 to 125	0.5	4	DPAK		L78M10CDT
FIXED 10V	0 to 125	0.5	4	ISOWATT220		L78M10CP
FIXED 10V	0 to 125	0.5	4	SOT-194		L78M10CS
FIXED 10V	0 to 125	0.5	4	TO-220		L78M10CV
FIXED 10V	0 to 125	0.5	4	SOT-82		L78M10CX
FIXED 12V	-40 to 125	0.5	2	DPAK	MC78M12BDT	L78M12ABDT
FIXED 12V	-40 to 125	0.5	2	SOT-194		L78M12ABS
FIXED 12V	-40 to 125	0.5	2	TO-220	MC78M12BT	L78M12ABV
FIXED 12V	0 to 125	0.5	2	DPAK		L78M12ACDT
FIXED 12V	0 to 125	0.5	4	DPAK	MC78M12CDT	L78M12CDT
FIXED 12V	0 to 125	0.5	4	ISOWATT220		L78M12CP
FIXED 12V	0 to 125	0.5	4	SOT-194		L78M12CS
FIXED 12V	0 to 125	0.5	4	TO-220	MC78M12CT	L78M12CV
FIXED 12V	0 to 125	0.5	4	SOT-82		L78M12CX
FIXED 15V	-40 to 125	0.5	2	DPAK	MC78M15BDT	L78M15ABDT
FIXED 15V	-40 to 125	0.5	2	TO-220	MC78M15BT	L78M15ABV
FIXED 15V	0 to 125	0.5	2	DPAK		L78M15ACDT
FIXED 15V	0 to 125	0.5	4	DPAK	MC78M15CDT	L78M15CDT
FIXED 15V	0 to 125	0.5	4	ISOWATT220		L78M15CP
FIXED 15V	0 to 125	0.5	4	SOT-194		L78M15CS
FIXED 15V	0 to 125	0.5	4	TO-220	MC78M15CT	L78M15CV
FIXED 15V	0 to 125	0.5	4	SOT-82		L78M15CX
FIXED 18V	-40 to 125	0.5	2	DPAK	MC78M18BDT	L78M18ABDT
FIXED 18V	-40 to 125	0.5	2	TO-220	MC78M18BT	L78M18ABV
FIXED 18V	0 to 125	0.5	2	DPAK		L78M18ACDT
FIXED 18V	0 to 125	0.5	4	DPAK	MC78M18CDT	L78M18CDT
FIXED 18V	0 to 125	0.5	4	ISOWATT220		L78M18CP
FIXED 18V	0 to 125	0.5	4	SOT-194		L78M18CS
FIXED 18V	0 to 125	0.5	4	TO-220	MC78M18CT	L78M18CV
FIXED 18V	0 to 125	0.5	4	SOT-82		L78M18CX
FIXED 20V	-40 to 125	0.5	2	DPAK	MC78M20BDT	L78M20ABDT
FIXED 20V	-40 to 125	0.5	2	TO-220	MC78M20BT	L78M20ABV
FIXED 20V	0 to 125	0.5	2	DPAK		L78M20ACDT
FIXED 20V	0 to 125	0.5	4	DPAK	MC78M20CDT	L78M20CDT
FIXED 20V	0 to 125	0.5	4	ISOWATT220		L78M20CP
FIXED 20V	0 to 125	0.5	4	SOT-194		L78M20CS
FIXED 20V	0 to 125	0.5	4	TO-220	MC78M20CT	L78M20CV
FIXED 20V	0 to 125	0.5	4	SOT-82		L78M20CX
FIXED 24V	-40 to 125	0.5	2	DPAK	MC78M24BDT	L78M24ABDT
FIXED 24V	-40 to 125	0.5	2	TO-220	MC78M24BT	L78M24ABV
FIXED 24V	0 to 125	0.5	2	DPAK		L78M24ACDT
FIXED 24V	0 to 125	0.5	4	DPAK	MC78M24CDT	L78M24CDT
FIXED 24V	0 to 125	0.5	4	ISOWATT220		L78M24CP
FIXED 24V	0 to 125	0.5	4	SOT-194		L78M24CS
FIXED 24V	0 to 125	0.5	4	TO-220	MC78M24CT	L78M24CV
FIXED 24V	0 to 125	0.5	4	SOT-82		L78M24CX
FIXED 5V	0 to 150	2.0	4	TO-3		L78S05CT
FIXED 5V	0 to 150	2.0	4	TO-220		L78S05CV
FIXED 7.5V	0 to 150	2.0	4	TO-3		L78S75CT
FIXED 7.5V	0 to 150	2.0	4	TO-220		L78S75CV
FIXED 9V	0 to 150	2.0	4	TO-3		L78S09CT
FIXED 9V	0 to 150	2.0	4	TO-220		L78S09CV
FIXED 10V	0 to 150	2.0	4	TO-3		L78S10CT
FIXED 10V	0 to 150	2.0	4	TO-220		L78S10CV
FIXED 12V	0 to 150	2.0	4	TO-3		L78S12CT
FIXED 12V	0 to 150	2.0	4	TO-220		L78S12CV
FIXED 15V	0 to 150	2.0	4	TO-3		L78S15CT
FIXED 15V	0 to 150	2.0	4	TO-220		L78S15CV
FIXED 18V	0 to 150	2.0	4	TO-3		L78S18CT
FIXED 18V	0 to 150	2.0	4	TO-220		L78S18CV
FIXED 24V	0 to 150	2.0	4	TO-3		L78S24CT
FIXED 24V	0 to 150	2.0	4	TO-220		L78S24CV



# MOTOROLA to ST

Vol. Reg. Description	Tj °C	Iout A	Tol. %	Package	MOTOROLA	
5V NEG. FIXED	0 to 125	1.5	2	TO-220	MC7905ACT	L7905ACV
5V NEG. FIXED	0 to 125	1.5	4	ISOWATT220		L7905CP
5V NEG. FIXED	0 to 150	1.5	4	TO-3		L7905CT
5V NEG. FIXED	0 to 125	1.5	4	TO-220	MC7905CK	L7905CV
5.2V NEG.FIXED	0 to 125	1.5	2	TO-220	MC7952ACT	L7952ACV
5.2V NEG.FIXED	0 to 150	1.5	4	TO-3	MC7952CK	L7952CT
5.2V NEG.FIXED	0 to 125	1.5	4	TO-220	MC7952CT	L7952CV
6V NEG. FIXED	0 to 150	1.5	4	TO-3	MC7906CK	L7906CT
6V NEG. FIXED	0 to 125	1.5	4	TO-220	MC7906CT	L7906CV
8V NEG. FIXED	0 to 125	1.5	2	TO-220	MC7908ACT	L7908ACV
8V NEG. FIXED	0 to 150	1.5	4	TO-3	MC7908CK	L7908CT
8V NEG. FIXED	0 to 125	1.5	4	TO-220	MC7908CT	L7908CV
12V NEG. FIXED	0 to 125	1.5	2	TO-220	MC7912ACT	L7912ACV
12V NEG. FIXED	0 to 125	1.5	4	ISOWATT220		L7912CP
12V NEG. FIXED	0 to 150	1.5	4	TO-3	MC7912CK	L7912CT
12V NEG. FIXED	0 to 125	1.5	4	TO-220	MC7912CT	L7912CV
15V NEG. FIXED	0 to 125	1.5	2	TO-220	MC7915ACT	L7915ACV
15V NEG. FIXED	0 to 150	1.5	4	TO-3	MC7915CK	L7915CT
15V NEG. FIXED	0 to 125	1.5	4	TO-220	MC7915CT	L7915CV
18V NEG. FIXED	0 to 125	1.5	2	TO-220	MC7918ACT	L7918ACV
18V NEG. FIXED	0 to 150	1.5	4	TO-3	MC7918CK	L7918CT
18V NEG. FIXED	0 to 125	1.5	4	TO-220	MC7918CT	L7918CV
20V NEG. FIXED	0 to 125	1.5	2	TO-220		L7920ACV
20V NEG. FIXED	0 to 150	1.5	4	TO-3		L7920CT
20V NEG. FIXED	0 to 125	1.5	4	TO-220		L7920CV
22V NEG. FIXED	0 to 150	1.5	4	TO-3		L7922CT
22V NEG. FIXED	0 to 125	1.5	4	TO-220		L7922CV
24V NEG. FIXED	0 to 125	1.5	2	TO-220		L7924ACV
24V NEG. FIXED	0 to 150	1.5	4	TO-3	MC7924CK	L7924CT
24V NEG. FIXED	0 to 125	1.5	4	TO-220	MC7924CT	L7924CV
5V NEG. FIXED	-40 to 125	0.1	4	SO-8	MC79L05ABP	L79L05ABD
5V NEG. FIXED	-40 to 125	0.1	4	TO-92	MC79L05ABP	L79L05ABZ
5V NEG. FIXED	0 to 125	0.1	4	SO-8	MC79L05ACD	L79L05ACD
5V NEG. FIXED	0 to 125	0.1	4	TO-92	MC79L05ACP	L79L05ACZ
5V NEG. FIXED	0 to 125	0.1	8	SO-8	MC79L05ACD	L79L05CD
6V NEG.FIXED	-40 to 125	0.1	4	SO-8		L79L06ABD
6V NEG.FIXED	-40 to 125	0.1	4	TO-92		L679L06ABZ
6V NEG.FIXED	0 to 125	0.1	4	SO-8		L79L06ACD
6V NEG.FIXED	0 to 125	0.1	4	TO-92		L79L06ACZ
6V NEG.FIXED	0 to 125	0.1	8	SO-8		L79L06CD
8V NEG.FIXED	-40 to 125	0.1	4	SO-8		L79L08ABD
8V NEG.FIXED	-40 to 125	0.1	4	TO-92		L79L08ABZ
8V NEG.FIXED	0 to 125	0.1	4	SO-8		L79L08ACD
8V NEG.FIXED	0 to 125	0.1	4	TO-92		L79L08ACZ
8V NEG.FIXED	0 to 125	0.1	8	SO-8		L79L08CD
9V NEG.FIXED	-40 to 125	0.1	4	SO-8		L79L09ABD
9V NEG.FIXED	-40 to 125	0.1	4	TO 92		L79L09ABZ
9V NEG.FIXED	0 to 125	0.1	4	SO-8		L79L09ACD
9V NEG.FIXED	0 to 125	0.1	4	TO-92		L79L09ACZ
9V NEG.FIXED	0 to 125	0.1	8	SO-8		L79L09CD
12V NEG.FIXED	-40 to 125	0.1	4	SO-8	MC79L12ABP	L79L12ABD
12V NEG.FIXED	-40 to 125	0.1	4	TO-92	MC79L12ABP	L79L12ABZ
12V NEG.FIXED	0 to 125	0.1	4	SO-8	MC79L12ACD	L79L12ACD
12V NEG.FIXED	0 to 125	0.1	4	TO-92	MC79L12ACP	L79L12ACZ
12V NEG.FIXED	0 to 125	0.1	8	SO-8	MC79L12ACD	L79L12CD
15V NEG.FIXED	-40 to 125	0.1	4	SO-8	MC79L15ABP	L79L15ABD
15V NEG.FIXED	-40 to 125	0.1	4	TO-92	MC79L15ABP	L79L15ABZ
15V NEG.FIXED	0 to 125	0.1	4	SO-8	MC79L15ACD	L79L15ACD
15V NEG.FIXED	0 to 125	0.1	4	TO-92	MC79L15ACD	L79L15ACZ
15V NEG.FIXED	0 to 125	0.1	8	SO-8	MC79L15ACD	L79L15CD
2.5V LOW DROP	0 to 125	0.8	1	DPAK		LD1117DT25
2.5V LOW DROP	0 to 125	0.8	2	DPAK		LD1117DT25C
2.85V LOW DROP	0 to 125	0.8	1	DPAK	MC34268D	LD1117DT285
2.85V LOW DROP	0 to 125	0.8	2	DPAK		LD1117DT285C
3V LOW DROP	0 to 125	0.8	1	DPAK		LD1117DT30
3V LOW DROP	0 to 125	0.8	2	DPAK		LD1117DT30C
3.3V LOW DROP	0 to 125	0.8	1	DPAK		LD1117DT33

# MOTOROLA to ST

Vol. Reg. Description	Tj °C	Iout A	Tol. %	Package	MOTOROLA	ST
3.3V LOW DROP	0 to 125	0.8	2	DPAK		LD1117DT33C
5V LOW DROP	0 to 125	0.8	1	DPAK		LD1117DT50
5V LOW DROP	0 to 125	0.8	2	DPAK		LD1117DT50C
2.5V LOW DROP	0 to 125	0.8	1	TO-220		LD1117V25
2.5V LOW DROP	0 to 125	0.8	2	TO-220		LD1117V25C
2.85V LOW DROP	0 to 125	0.8	1	TO-220		LD1117V285
2.85V LOW DROP	0 to 125	0.8	2	TO-220		LD1117V285C
3V LOW DROP	0 to 125	0.8	1	TO-220		LD1117V30
3V LOW DROP	0 to 125	0.8	2	TO-220		LD1117V30C
3.3V LOW DROP	0 to 125	0.8	1	TO-220		LD1117V33
3.3V LOW DROP	0 to 125	0.8	2	TO-220		LD1117V33C
5V LOW DROP	0 to 125	0.8	1	TO-220		LD1117V50
5V LOW DROP	0 to 125	0.8	2	TO-220		LD1117V50C
2.5V L.D./L. QUIE.	-40 to 125	0.1	3	SO-8		LK115D25
3V L.D./L. QUIE.	-40 to 125	0.1	3	SO-8		LK115D30
3.3V L.D./L. QUIE.	-40 to 125	0.1	3	SO-8		LK115D33
4V L.D./L. QUIE.	-40 to 125	0.1	3	SO-8		LK115D40
4.75V L.D./L. QUIE.	-40 to 125	0.1	3	SO-8		LK115D47
4.85V L.D./L. QUIE.	-40 to 125	0.1	3	SO-8		LK115D48
5V L.D./L. QUIE.	-40 to 125	0.1	3	SO-8		LK115D50
1.2V-37V ADJ.	-55 to 150	0.5	4	TO-39	LM117H	LM117H
1.2V-37V ADJ.	-55 to 150	1.5	4	TO-3	LM117K	LM117K
FIXED 5V	-55 to 150	3.0	4	TO-3	LM123K	LM123K
1.2V-37V A. N.	-55 to 150	1.5	4	TO-39	LM137H	LM137H
1.2V-37V A. N.	-55 to 150	1.5	4	TO-3	LM137K	LM137K
1.2V-32V ADJ.	-55 to 150	5.0	4	TO-3		LM138K
1.2V-32V ADJ.	-55 to 150	3.0	4	TO-3	LM150K	LM150K
1.2V-37V ADJ.	-25 to 150	0.5	4	TO-39	LM217H	LM217H
1.2V-37V ADJ.	-25 to 150	1.5	4	TO-3	LM217K	LM217K
1.2V-37V ADJ.	-25 to 150	0.1	4	SO-8	LM217LD	LM217LD
1.2V-37V ADJ.	-25 to 150	0.1	4	TO-92	LM217LZ	LM217LZ
1.2V-37V ADJ.	-25 to 150	1.5	4	TO-220		LM217T
FIXED 5V	-25 to 150	3.0	4	TO-3	LM223K	LM223K
1.2V-37V A. N.	-25 to 150	0.5	4	TO-39	LM237H	LM237H
1.2V-37V A. N.	-25 to 150	1.5	4	TO-3	LM237K	LM237K
1.2V-37V A. N.	-25 to 150	1.5	4	TO-220		LM237SP
1.2V-32V ADJ.	-25 to 150	5.0	4	TO-3		LM238K
1.2V-32V ADJ.	-25 to 150	3.0	4	TO-3	LM250K	LM250K
1.2V-37V ADJ.	0 to 125	0.5	4	TO-39	LM317H	LM317H
1.2V-37V ADJ.	0 to 125	1.5	4	TO-3	LM317K	LM317K
1.2V-37V ADJ.	0 to 125	0.1	4	SO-8	LM317LD	LM317LD
1.2V-37V ADJ.	0 to 125	0.1	4	TO-92	LM317LZ	LM317LZ
1.2V-37V ADJ.	0 to 125	0.5	4	DPAK	LM31MDT	LM317MDT
1.2V-37V ADJ.	0 to 125	0.5	4	TO-220	LM317T	LM317MT
1.2V-37V ADJ.	0 to 125	1.5	4	TO-220	LM317T	LM317T
FIXED 5V	0 to 125	0.5	4	TO-92	LM323T	LM323H
FIXED 5V	0 to 125	3.0	4	TO-3	LM323K	LM323K
FIXED 5V	0 to 125	1.5	4	TO-220	LM323K	LM323T
1.2V-37V A. N.	0 to 125	1.5	4	TO-39	LM337K	LM337H
1.2V-37V A. N.	0 to 125	1.5	4	TO-3	LM337K	LM337K
1.2V-37V A. N.	0 to 125	1.5	4	TO-220	LM337T	LM337SP
1.2V-32V ADJ.	0 to 125	5.0	4	TO-3		LM338K
1.2V-32V ADJ.	0 to 150	3.0	4	TO-3	LM350K	LM350K
3-37V ADJ.	0 to 125	3.0	4	SO-14		LM723ACD
3-37V ADJ.	0 to 125	0.15	4	SO-14	MC1723CD	LM723CD
3-37V ADJ.	0 to 125	0.15	4	TO-100	MC1723CG	LM723CH
3-37V ADJ.	0 to 125	0.15	4	Plastic Dil 14	MC1723CP	LM723CN
3-37V ADJ.	-25 to 150	0.15	4	TO-100	MC1723G	LM723H


# NATIONAL to ST

Vol. Reg. Description	Tj °C	Iout A	Tol. %	Package	NATIONAL	ST
5V LOW DROP	-40 to 150	1.5	2	TO-220		L4940V5
8.5V LOW DROP	-40 to 150	1.5	2	TO-220		L4940V85
10V LOW DROP	-40 to 150	1.5	2	TO-220		L4940V10
12V LOW DROP	-40 to 150	1.5	2	TO-220		L4940V12
5V LOW DROP	-40 to 150	1.0	4	DPAK		L4941BDT
5V LOW DROP	-40 to 150	1.0	4	SOT-194		L4941BS
5V LOW DROP	-40 to 150	1.0	4	TO-220		L4941BV
5V LOW DROP	-40 to 150	1.0	4	SOT-82		L4941BX
FIXED 5V	-40 to 125	1.5	2	TO-220	LM140AK	L7805ABV
FIXED 5V	0 to 125	1.5	2	TO-220	LM340AT-5.0	L7805ACV
FIXED 5V	0 to 125	1.5	4	ISOWATT220		L7805CP
FIXED 5V	0 to 125	1.5	4	TO-3	LM340K -5.0	L7805CT
FIXED 5V	0 to 125	1.5	4	TO-220	LM7805CT	L7805CV
FIXED 5.2V	0 to 125	1.5	4	ISOWATT220		L7852CV
FIXED 6V	-40 to 125	1.5	2	TO-220	LM140AK-5.0	L7806ABV
FIXED 6V	0 to 125	1.5	2	TO-220	LM340AT-5.0	L7806ACV
FIXED 6V	0 to 125	1.5	4	ISOWATT220		L7806CP
FIXED 6V	0 to 125	1.5	4	TO-3		L7806CT
FIXED 6V	0 to 125	1.5	4	TO-220		L7806CV
FIXED 8V	-40 to 125	1.5	2	TO-220		L7808ABV
FIXED 8V	0 to 125	1.5	2	TO-220	LM340AT	L7808ACV
FIXED 8V	0 to 125	1.5	4	ISOWATT220		L7808CP
FIXED 8V	0 to 125	1.5	4	TO-3		L7808CT
FIXED 8V	0 to 125	1.5	4	TO-220		L7808CV
FIXED 8.5V	0 to 125	1.5	4	TO-3		L7885CT
FIXED 8.5V	0 to 125	1.5	4	TO-220		L7885CV
FIXED 9V	-40 to 125	1.5	2	TO-220		L7809ABV
FIXED 9V	0 to 125	1.5	2	TO-220	LM340AT	L7809ACV
FIXED 9V	0 to 125	1.5	4	ISOWATT220		L7809CP
FIXED 9V	0 to 125	1.5	4	TO-3		L7809CT
FIXED 9V	0 to 125	1.5	4	TO-220		L7809CV
FIXED 12V	-40 to 125	1.5	2	TO-220	LM140AK-12	L7812ABV
FIXED 12V	0 to 125	1.5	2	TO-220	LM340AT-12	L7812ACV
FIXED 12V	0 to 125	1.5	4	ISOWATT220		L7812CP
FIXED 12V	0 to 125	1.5	4	TO-3	LM340K-12	L7812CT
FIXED 12V	0 to 125	1.5	4	TO-220	LM7812CT	L7812CV
FIXED 15V	-40 to 125	1.5	2	TO-220	LM140AK-15	L7815ABV
FIXED 15V	0 to 125	1.5	2	TO-220	LM340AT-15	L7815ACV
FIXED 15V	0 to 125	1.5	4	ISOWATT220		L7815CP
FIXED 15V	0 to 125	1.5	4	TO-3	LM340K-15	L7815CT
FIXED 15V	0 to 125	1.5	4	TO-220	LM7815CT	L7815CV
FIXED 18V	-40 to 125	1.5	2	TO-220		L7818ABV
FIXED 18V	0 to 125	1.5	2	TO-220	LM340AT	L7818ACV
FIXED 18V	0 to 125	1.5	4	ISOWATT220		L7818CP
FIXED 18V	0 to 125	1.5	4	TO-3		L7818CT
FIXED 18V	0 to 125	1.5	4	TO-220	LM7818CT	L7818CV
FIXED 20V	-40 to 125	1.5	2	TO-220		L7820ABV
FIXED 20V	0 to 125	1.5	2	TO-220		L7820ACV
FIXED 20V	0 to 125	1.5	4	ISOWATT220		L7820CP
FIXED 20V	0 to 125	1.5	4	TO-220		L7820C-T
FIXED 20V	0 to 125	1.5	4	TO-220		L7820CV
FIXED 24V	-40 to 125	1.5	2	TO-220		L7824ABV
FIXED 24V	0 to 125	1.5	2	TO-220		L7824ACV
FIXED 24V	0 to 125	1.5	4	ISOWATT220		L7824CP
FIXED 24V	0 to 125	1.5	4	TO-3		L7824CT
FIXED 24V	0 to 125	1.5	4	TO-220	LM7824CT	L7824CV
FIXED 3.3V	0 to 125	0.1	4	SO-8		L78L33ACD
FIXED 3.3V	0 to 125	0.1	4	TO-92		L78L33ACZ
FIXED 5V	-40 to 125	0.1	4	SO-8		L78L05ABD
FIXED 5V	-40 to 125	0.1	4	TO-92		L78L05ABZ
FIXED 5V	0 to 125	0.1	4	SO-8	LM78L05ACM	L78L05ACD
FIXED 5V	0 to 125	0.1	4	TO-92	LM78L05ACZ	L78L05ACZ
FIXED 5V	0 to 125	0.1	8	SO-8		L78L05CD
FIXED 6V	-40 to 125	0.1	4	SO-8		L78L06ABD
FIXED 6V	-40 to 125	0.1	4	TO-92		L78L06ABZ
FIXED 6V	0 to 125	0.1	4	SO-8	LM78L06ACM	L78L06ACD
FIXED 6V	0 to 125	0.1	4	TO-92	LM87L06ACZ	L78L06ACZ

# NATIONAL to ST

Vol. Reg. Description	Tj °C	Iout A	Tol. %	Package	NATIONAL	ST
FIXED 6V	0 to 125	0.1	8	SO-8		L78L06CD
FIXED 8V	-40 to 125	0.1	4	SO-8		L78L08ABD
FIXED 8V	-40 to 125	0.1	4	TO-92		L78L08ABZ
FIXED 8V	0 to 125	0.1	4	SO-8	LM78L08ACM	L78L08ACD
FIXED 8V	0 to 125	0.1	4	TO-92	LM78L08ACZ	L78L08ACZ
FIXED 8V	0 to 125	0.1	8	SO-8		L78L08CD
FIXED 9V	-40 to 125	0.1	4	SO-8		L78L09ABD
FIXED 9V	-40 to 125	0.1	4	TO-92		L78L09ABZ
FIXED 9V	0 to 125	0.1	4	SO-8	LM78L09ACM	L78L09ACD
FIXED 9V	0 to 125	0.1	4	TO-92	LM78L09ACZ	L78L09ACZ
FIXED 9V	0 to 125	0.1	8	SO-8		L78L09CD
FIXED 12V	-40 to 125	0.1	4	SO-8		L78L12ABD
FIXED 12V	-40 to 125	0.1	4	TO-92		L78L12ABZ
FIXED 12V	0 to 125	0.1	4	SO-8	LM78L12ACM	L78L12ACD
FIXED 12V	0 to 125	0.1	4	TO-92	LM78L12ACZ	L78L12ACZ
FIXED 12V	0 to 125	0.1	8	SO-8		L78L12CD
FIXED 15V	-40 to 125	0.1	4	SO-8		L78L15ABD
FIXED 15V	-40 to 125	0.1	4	TO-92		L78L15ABZ
FIXED 15V	0 to 125	0.1	4	SO-8		L78L15ACD
FIXED 15V	0 to 125	0.1	4	TO-92	LM78L15ACM	L78L15ACZ
FIXED 15V	0 to 125	0.1	8	SO-8	LM78L15ACZ	L78L15CD
FIXED 18V	-40 to 125	0.1	4	SO-8		L78L18ABD
FIXED 18V	-40 to 125	0.1	4	TO-92		L78L18ABZ
FIXED 18V	0 to 125	0.1	4	SO-8	LM78L18ACM	L78L18ACD
FIXED 18V	0 to 125	0.1	4	TO-92	LM78L18ACZ	L78L18ACZ
FIXED 18V	0 to 125	0.1	8	SO-8		L78L18CD
FIXED 24V	-40 to 125	0.1	4	SO-8		L78L24ABD
FIXED 24V	-40 to 125	0.1	4	TO-92		L78L24ABZ
FIXED 24V	0 to 125	0.1	4	SO-8	LM78L24ACM	L78L24ACD
FIXED 24V	0 to 125	0.1	4	TO-92	LM78L24ACZ	L78L24ACZ
FIXED 24V	0 to 125	0.1	8	SO-8		L78L24CD
FIXED 24V	0 to 125	0.1	8	TO-92		L78L24ACZ
FIXED 5V	-40 to 125	0.5	2	DPAK		L78M05ABDT
FIXED 5V	-40 to 125	0.5	2	SOT-194		L78M05ABS
FIXED 5V	-40 to 125	0.5	2	TO-220	LM341T-0.5	L78M05ABV
FIXED 5V	-40 to 125	0.5	2	SOT-82		L78M05ABX
FIXED 5V	0 to 125	0.5	2	DPAK		L78M05ACDT
FIXED 5V	0 to 125	0.5	2	SOT-194		L78M05ACS
FIXED 5V	0 to 125	0.5	4	DPAK		L78M05CDT
FIXED 5V	0 to 125	0.5	4	ISOWATT220		L78M05CP
FIXED 5V	0 to 125	0.5	4	SOT-194		L78M05CS
FIXED 5V	0 to 125	0.5	4	TO-220	L78M05CT	L78M05CV
FIXED 5V	0 to 125	0.5	4	SOT-82		L78M05CX
FIXED 6V	-40 to 125	0.5	2	DPAK		L78M06ABDT
FIXED 6V	-40 to 125	0.5	2	SOT-194		L78M06ABS
FIXED 6V	-40 to 125	0.5	2	TO-220		L78M06ABV
FIXED 6V	0 to 125	0.5	2	DPAK		L78M06ACDT
FIXED 6V	0 to 125	0.5	4	DPAK		L78M06CDT
FIXED 6V	0 to 125	0.5	4	ISOWATT220		L78M06CP
FIXED 6V	0 to 125	0.5	4	SOT-194		L78M06CS
FIXED 6V	0 to 125	0.5	4	TO-220	LM78M06CT	L78M06CV
FIXED 6V	0 to 125	0.5	4	SOT-82		L78M06CX
FIXED 8V	-40 to 125	0.5	2	DPAK		L78M08ABDT
FIXED 8V	-40 to 125	0.5	2	SOT-194		L78M08ABS
FIXED 8V	-40 to 125	0.5	2	TO-220		L78M08ABV
FIXED 8V	0 to 125	0.5	2	DPAK		L78M08ACDT
FIXED 8V	0 to 125	0.5	4	DPAK		L78M08CDT
FIXED 8V	0 to 125	0.5	4	ISOWATT220		L78M08CP
FIXED 8V	0 to 125	0.5	4	SOT-194		L78M08CS
FIXED 8V	0 to 125	0.5	4	TO-220	LM78M08CT	L78M08CV
FIXED 8V	0 to 125	0.5	4	SOT-82		L78M08CX
FIXED 9V	-40 to 125	0.5	2	DPAK		L78M09ABDT
FIXED 9V	-40 to 125	0.5	2	TO-220	LM140AK	L78M09ABV
FIXED 9V	0 to 125	0.5	2	DPAK		L78M09ACDT
FIXED 9V	0 to 125	0.5	4	DPAK		L78M09CDT
FIXED 9V	0 to 125	0.5	4	ISOWATT220		L78M09CP
FIXED 9V	0 to 125	0.5	4	SOT-194		L78M09CS

# NATIONAL to ST

Vol. Reg. Description	Tj °C	Iout A	Tol. %	Package	NATIONAL	
FIXED 9V	0 to 125	0.5	4	TO-220		L78M09CV
FIXED 9V	0 to 125	0.5	4	SOT-82		L78M09CX
FIXED 10V	-40 to 125	0.5	2	DPAK		L78M10ABDT
FIXED 10V	-40 to 125	0.5	2	TO-220		L78M10ABV
FIXED 10V	0 to 125	0.5	2	DPAK		L78M10ACDT
FIXED 10V	0 to 125	0.5	4	DPAK		L78M10CDT
FIXED 10V	0 to 125	0.5	4	ISOWATT220		L78M10CP
FIXED 10V	0 to 125	0.5	4	SOT-194		L78M10CS
FIXED 10V	0 to 125	0.5	4	TO-220	LM78M10CT	L78M10CV
FIXED 10V	0 to 125	0.5	4	SOT-82		L78M10CX
FIXED 12V	-40 to 125	0.5	2	DPAK		L78M12ABDT
FIXED 12V	-40 to 125	0.5	2	SOT-194		L78M12ABS
FIXED 12V	-40 to 125	0.5	2	TO-220	LM341T-12	L78M12ABV
FIXED 12V	0 to 125	0.5	2	DPAK		L78M12ACDT
FIXED 12V	0 to 125	0.5	4	DPAK		L78M12CDT
FIXED 12V	0 to 125	0.5	4	ISOWATT220		L78M12CP
FIXED 12V	0 to 125	0.5	4	SOT-194		L78M12CS
FIXED 12V	0 to 125	0.5	4	TO-220	LM78M12CT	L78M12CV
FIXED 12V	0 to 125	0.5	4	SOT-82		L78M12CX
FIXED 15V	-40 to 125	0.5	2	DPAK		L78M15ABDT
FIXED 15V	-40 to 125	0.5	2	TO-220	LM341T-15	L78M15ABV
FIXED 15V	0 to 125	0.5	2	DPAK		L78M15ACDT
FIXED 15V	0 to 125	0.5	4	DPAK		L78M15CDT
FIXED 15V	0 to 125	0.5	4	ISOWATT220		L78M15CP
FIXED 15V	0 to 125	0.5	4	SOT-194		L78M15CS
FIXED 15V	0 to 125	0.5	4	TO-220	LM78M15CT	L78M15CV
FIXED 15V	0 to 125	0.5	4	SOT-82		L78M15CX
FIXED 18V	-40 to 125	0.5	2	DPAK		L78M18ABDT
FIXED 18V	-40 to 125	0.5	2	TO-220	LM341T-18	L78M18ABV
FIXED 18V	0 to 125	0.5	2	DPAK		L78M18ACDT
FIXED 18V	0 to 125	0.5	4	DPAK		L78M18CDT
FIXED 18V	0 to 125	0.5	4	ISOWATT220		L78M18CP
FIXED 18V	0 to 125	0.5	4	SOT-194		L78M18CS
FIXED 18V	0 to 125	0.5	4	TO-220	LM78M18CT	L78M18CV
FIXED 18V	0 to 125	0.5	4	SOT-82		L78M18CX
FIXED 20V	-40 to 125	0.5	2	DPAK		L78M20ABDT
FIXED 20V	-40 to 125	0.5	2	TO-220		L78M20ABV
FIXED 20V	0 to 125	0.5	2	DPAK		L78M20ACDT
FIXED 20V	0 to 125	0.5	4	DPAK		L78M20CDT
FIXED 20V	0 to 125	0.5	4	ISOWATT220		L78M20CP
FIXED 20V	0 to 125	0.5	4	SOT-194		L78M20CS
FIXED 20V	0 to 125	0.5	4	TO-220	LM78M20CT	L78M20CV
FIXED 20V	0 to 125	0.5	4	SOT-82		L78M20CX
FIXED 24V	-40 to 125	0.5	2	DPAK		L78M24ABDT
FIXED 24V	-40 to 125	0.5	2	TO-220		L78M24ABV
FIXED 24V	0 to 125	0.5	2	DPAK		L78M24ACDT
FIXED 24V	0 to 125	0.5	4	DPAK		L78M24CDT
FIXED 24V	0 to 125	0.5	4	ISOWATT220		L78M24CP
FIXED 24V	0 to 125	0.5	4	SOT-194		L78M24CS
FIXED 24V	0 to 125	0.5	4	TO-220	LM78M24CT	L78M24CV
FIXED 24V	0 to 125	0.5	4	SOT-82		L78M24CX
FIXED 5V	0 to 150	2.0	4	TO-3		L78S05CT
FIXED 5V	0 to 150	2.0	4	TO-220		L78S05CV
FIXED 7.5V	0 to 150	2.0	4	TO-3		L78S75CT
FIXED 7.5V	0 to 150	2.0	4	TO-220		L78S75CV
FIXED 9V	0 to 150	2.0	4	TO-3		L78S09CT
FIXED 9V	0 to 150	2.0	4	TO-220		L78S09CV
FIXED 10V	0 to 150	2.0	4	TO-3		L78S10CT
FIXED 10V	0 to 150	2.0	4	TO-220		L78S10CV
FIXED 12V	0 to 150	2.0	4	TO-3		L78S12CT
FIXED 12V	0 to 150	2.0	4	TO-220		L78S12CV
FIXED 15V	0 to 150	2.0	4	TO-3		L78S15CT
FIXED 15V	0 to 150	2.0	4	TO-220		L78S15CV
FIXED 18V	0 to 150	2.0	4	TO-3		L78S18CT
FIXED 18V	0 to 150	2.0	4	TO-220		L78S18CV
FIXED 24V	0 to 150	2.0	4	TO-3		L78S24CT
FIXED 24V	0 to 150	2.0	4	TO-220		L78S24CV



# NATIONAL to ST

Vol. Reg. Description	Tj °C	Iout A	Tol. %	Package	NATIONAL	ST
5V NEG. FIXED	0 to 125	1.5	2	TO-220	LM7905CT/LM320T-5.0	L7905ACV
5V NEG. FIXED	0 to 125	1.5	4	ISOWATT220		L7905CP
5V NEG. FIXED	0 to 150	1.5	4	TO-3	LM320K-5.0	L7905CT
5V NEG. FIXED	0 to 125	1.5	4	TO-220	LM7905CT	L7905CV
5.2V NEG.FIXED	0 to 125	1.5	2	TO-220		L7952ACV
5.2V NEG.FIXED	0 to 150	1.5	4	TO-3		L7952CT
5.2V NEG.FIXED	0 to 125	1.5	4	TO-220		L7952CV
6V NEG. FIXED	0 to 150	1.5	4	TO-3		L7906CT
6V NEG. FIXED	0 to 125	1.5	4	TO-220		L7906CV
8V NEG. FIXED	0 to 125	1.5	2	TO-220		L7908ACV
8V NEG. FIXED	0 to 150	1.5	4	TO-3		L7908CT
8V NEG. FIXED	0 to 125	1.5	4	TO-220		L7908CV
12V NEG. FIXED	0 to 125	1.5	2	TO-220	LM7912CT/LM320T-12	L7912ACV
12V NEG. FIXED	0 to 125	1.5	4	ISOWATT220		L7912CP
12V NEG. FIXED	0 to 150	1.5	4	TO-3	LM320K-12	L7912CT
12V NEG. FIXED	0 to 125	1.5	4	TO-220	LM7912CT	L7912CV
15V NEG. FIXED	0 to 125	1.5	2	TO-220	LM7915CT/LM320T-15	L7915ACV
15V NEG. FIXED	0 to 150	1.5	4	TO-3	LM320K-15	L7915CT
15V NEG. FIXED	0 to 125	1.5	4	TO-220	LM7915CT	L7915CV
18V NEG. FIXED	0 to 125	1.5	2	TO-220		L7918ACV
18V NEG. FIXED	0 to 150	1.5	4	TO-3		L7918CT
18V NEG. FIXED	0 to 125	1.5	4	TO-220		L7918CV
20V NEG. FIXED	0 to 125	1.5	2	TO-220		L7920ACV
20V NEG. FIXED	0 to 150	1.5	4	TO-3		L7920CT
20V NEG. FIXED	0 to 125	1.5	4	TO-220		L7920CV
22V NEG. FIXED	0 to 150	1.5	4	TO-3		L7922CT
22V NEG. FIXED	0 to 125	1.5	4	TO-220		L7922CV
24V NEG. FIXED	0 to 125	1.5	2	TO-220		L7924ACV
24V NEG. FIXED	0 to 150	1.5	4	TO-3		L7924CT
24V NEG. FIXED	0 to 125	1.5	4	TO-220		L7924CV
5V NEG. FIXED	-40 to 125	0.1	4	SO-8		L79L05ABD
5V NEG. FIXED	-40 to 125	0.1	4	TO-92		L79L05ABZ
5V NEG. FIXED	0 to 125	0.1	4	SO-8	LM79L05ACM	L79L05ACD
5V NEG. FIXED	0 to 125	0.1	4	TO-92	LM79L05ACZ	L79L05ACZ
5V NEG. FIXED	0 to 125	0.1	8	SO-8		L79L05CD
6V NEG.FIXED	-40 to 125	0.1	4	SO-8		L79L06ABD
6V NEG.FIXED	-40 to 125	0.1	4	TO-92		L679L06ABZ
6V NEG.FIXED	0 to 125	0.1	4	SO-8		L79L06ACD
6V NEG.FIXED	0 to 125	0.1	4	TO-92		L79L06ACZ
6V NEG.FIXED	0 to 125	0.1	8	SO-8		L79L06CD
8V NEG.FIXED	-40 to 125	0.1	4	SO-8		L79L08ABD
8V NEG.FIXED	-40 to 125	0.1	4	TO-92		L79L08ABZ
8V NEG.FIXED	0 to 125	0.1	4	SO-8		L79L08ACD
8V NEG.FIXED	0 to 125	0.1	4	TO-92		L79L08ACZ
8V NEG.FIXED	0 to 125	0.1	8	SO-8		L79L08CD
9V NEG.FIXED	-40 to 125	0.1	4	SO-8		L79L09ABD
9V NEG.FIXED	-40 to 125	0.1	4	TO 92		L79L09ABZ
9V NEG.FIXED	0 to 125	0.1	4	SO-8		L79L09ACD
9V NEG.FIXED	0 to 125	0.1	4	TO-92		L79L09ACZ
9V NEG.FIXED	0 to 125	0.1	8	SO-8		L79L09CD
12V NEG.FIXED	-40 to 125	0.1	4	SO-8		L79L12ABD
12V NEG.FIXED	-40 to 125	0.1	4	TO-92		L79L12ABZ
12V NEG.FIXED	0 to 125	0.1	4	SO-8	LM79L12ACM	L79L12ACD
12V NEG.FIXED	0 to 125	0.1	4	TO-92	LM79L12ACZ	L79L12ACZ
12V NEG.FIXED	0 to 125	0.1	8	SO-8		L79L12CD
15V NEG.FIXED	-40 to 125	0.1	4	SO-8		L79L15ABD
15V NEG.FIXED	-40 to 125	0.1	4	TO-92		L79L15ABZ
15V NEG.FIXED	0 to 125	0.1	4	SO-8	LM79L15ACM	L79L15ACD
15V NEG.FIXED	0 to 125	0.1	4	TO-92	LM79L15ACZ	L79L15ACZ
15V NEG.FIXED	0 to 125	0.1	8	SO-8		L79L15CD
2.5V LOW DROP	0 to 125	0.8	1	DPAK		LD1117DT25
2.5V LOW DROP	0 to 125	0.8	2	DPAK		LD1117DT25C
2.85V LOW DROP	0 to 125	0.8	1	DPAK		LD1117DT285
2.85V LOW DROP	0 to 125	0.8	2	DPAK		LD1117DT285C
3V LOW DROP	0 to 125	0.8	1	DPAK		LD1117DT30
3V LOW DROP	0 to 125	0.8	2	DPAK		LD1117DT30C
3.3V LOW DROP	0 to 125	0.8	1	DPAK		LD1117DT33

# NATIONAL to ST

Vol. Reg. Description	Tj °C	Iout A	Tol. %	Package	NATIONAL	ST
3.3V LOW DROP	0 to 125	0.8	2	DPAK		LD1117DT33C
5V LOW DROP	0 to 125	0.8	1	DPAK		LD1117DT50
5V LOW DROP	0 to 125	0.8	2	DPAK		LD1117DT50C
2.5V LOW DROP	0 to 125	0.8	1	TO-220		LD1117V25
2.5V LOW DROP	0 to 125	0.8	2	TO-220		LD1117V25C
2.85V LOW DROP	0 to 125	0.8	1	TO-220		LD1117V285
2.85V LOW DROP	0 to 125	0.8	2	TO-220		LD1117V285C
3V LOW DROP	0 to 125	0.8	1	TO-220		LD1117V30
3V LOW DROP	0 to 125	0.8	2	TO-220		LD1117V30C
3.3V LOW DROP	0 to 125	0.8	1	TO-220		LD1117V33
3.3V LOW DROP	0 to 125	0.8	2	TO-220		LD1117V33C
5V LOW DROP	0 to 125	0.8	1	TO-220		LD1117V50
5V LOW DROP	0 to 125	0.8	2	TO-220		LD1117V50C
2.5V L. D./L. QUIE.	-40 to 125	0.1	3	SO-8		LK115D25
3V L. D./L. QUIE.	-40 to 125	0.1	3	SO-8		LK115D30
3.3V L. D./L. QUIE.	-40 to 125	0.1	3	SO-8		LK115D33
4V L. D./L. QUIE.	-40 to 125	0.1	3	SO-8		LK115D40
4.75V L. D./L. QUIE.	-40 to 125	0.1	3	SO-8		LK115D47
4.85V L. D./L. QUIE.	-40 to 125	0.1	3	SO-8		LK115D48
5V L. D./L. QUIE.	-40 to 125	0.1	3	SO-8		LK115D50
1.2V-37V ADJ.	-55 to 150	0.5	4	TO-39	LM117H	LM117H
1.2V-37V ADJ.	-55 to 150	1.5	4	TO-3	LM117K	LM117K
FIXED 5V	-55 to 150	3.0	4	TO-3	LM123K	LM123K
1.2V-37V A. N.	-55 to 150	1.5	4	TO-39	LM137H	LM137H
1.2V-37V A. N.	-55 to 150	1.5	4	TO-3	LM137K	LM137K
1.2V-32V ADJ.	-55 to 150	5.0	4	TO-3	LM138K	LM138K
1.2V-32V ADJ.	-55 to 150	3.0	4	TO-3	LM150K	LM150K
1.2V-37V ADJ.	-25 to 150	0.5	4	TO-39		LM217H
1.2V-37V ADJ.	-25 to 150	1.5	4	TO-3		LM217K
1.2V-37V ADJ.	-25 to 150	0.1	4	SO-8		LM217LD
1.2V-37V ADJ.	-25 to 150	0.1	4	TO-92		LM217LZ
1.2V-37V ADJ.	-25 to 150	1.5	4	TO-220	LM217T	LM217T
FIXED 5V	-25 to 150	3.0	4	TO-3		LM223K
1.2V-37V A. N.	-25 to 150	0.5	4	TO-39		LM237H
1.2V-37V A. N.	-25 to 150	1.5	4	TO-3		LM237K
1.2V-37V A. N.	-25 to 150	1.5	4	TO-220		LM237SP
1.2V-32V ADJ.	-25 to 150	5.0	4	TO-3		LM238K
1.2V-32V ADJ.	-25 to 150	3.0	4	TO-3		LM250K
1.2V-37V ADJ.	0 to 125	0.5	4	TO-39	LM317K	LM317H
1.2V-37V ADJ.	0 to 125	1.5	4	TO-3	LM317K	LM317K
1.2V-37V ADJ.	0 to 125	0.1	4	SO-8	LM317LM	LM317LD
1.2V-37V ADJ.	0 to 125	0.1	4	TO-92	LM317LZ	LM317LZ
1.2V-37V ADJ.	0 to 125	0.5	4	DPAK		LM317MDT
1.2V-37V ADJ.	0 to 125	0.5	4	TO-220	LM317T	LM317MT
1.2V-37V ADJ.	0 to 125	1.5	4	TO-220	LM317T	LM317T
FIXED 5V	0 to 125	0.5	4	TO-92		LM323H
FIXED 5V	0 to 125	3.0	4	TO-3	LM323K	LM323K
FIXED 5V	0 to 125	1.5	4	TO-220		LM323T
1.2V-37V A. N.	0 to 125	1.5	4	TO-39		LM337H
1.2V-37V A. N.	0 to 125	1.5	4	TO-3	LM337K	LM337K
1.2V-37V A. N.	0 to 125	1.5	4	TO-220	LM337T	LM337SP
1.2V-32V ADJ.	0 to 125	5.0	4	TO-3	LM338K	LM338K
1.2V-32V ADJ.	0 to 150	3.0	4	TO-3	LM350K	LM350K
3-37V ADJ.	0 to 125	3.0	4	SO-14		LM723ACD
3-37V ADJ.	0 to 125	0.15	4	SO-14		LM723CD
3-37V ADJ.	0 to 125	0.15	4	TO-100	LM723CH	LM723CH
3-37V ADJ.	0 to 125	0.15	4	Plastic Dil 14	LM723CN	LM723CN
3-37V ADJ.	-25 to 150	0.15	4	TO-100	LM723H	LM723H

# TEXAS INSTRUMENTS to ST

Vol. Reg. Description	Tj °C	Iout A	Tol. %	Package	TEXAS INSTRU.	ST
5V LOW DROP	-40 to 150	1.5	2	TO-220		L4940V5
8.5V LOW DROP	-40 to 150	1.5	2	TO-220		L4940V85
10V LOW DROP	-40 to 150	1.5	2	TO-220		L4940V10
12V LOW DROP	-40 to 150	1.5	2	TO-220		L4940V12
5V LOW DROP	-40 to 150	1.0	4	DPAK		L4941BDT
5V LOW DROP	-40 to 150	1.0	4	SOT-194		L4941BS
5V LOW DROP	-40 to 150	1.0	4	TO-220		L4941BV
5V LOW DROP	-40 to 150	1.0	4	SOT-82		L4941BX
FIXED 5V	-40 to 125	1.5	2	TO-220	UA7805QKC	L7805ABV
FIXED 5V	0 to 125	1.5	2	TO-220	UA7805CKC	L7805ACV
FIXED 5V	0 to 125	1.5	4	ISOWATT220		L7805CP
FIXED 5V	0 to 125	1.5	4	TO-3		L7805CT
FIXED 5V	0 to 125	1.5	4	TO-220	UA7805CKC	L7805CV
FIXED 5.2V	0 to 125	1.5	4	ISOWATT220		L7852CV
FIXED 6V	-40 to 125	1.5	2	TO-220		L7806ABV
FIXED 6V	0 to 125	1.5	2	TO-220	UA7806CKC	L7806ACV
FIXED 6V	0 to 125	1.5	4	ISOWATT220		L7806CP
FIXED 6V	0 to 125	1.5	4	TO-3		L7806CT
FIXED 6V	0 to 125	1.5	4	TO-220	UA7806CKC	L7806CV
FIXED 8V	-40 to 125	1.5	2	TO-220		L7808ABV
FIXED 8V	0 to 125	1.5	2	TO-220	UA7808CKC	L7808ACV
FIXED 8V	0 to 125	1.5	4	ISOWATT220		L7808CP
FIXED 8V	0 to 125	1.5	4	TO-3		L7808CT
FIXED 8V	0 to 125	1.5	4	TO-220	UA7808CKC	L7808CV
FIXED 8.5V	0 to 125	1.5	4	TO-3		L7885CT
FIXED 8.5V	0 to 125	1.5	4	TO-220	UA7885CKC	L7885CV
FIXED 9V	-40 to 125	1.5	2	TO-220		L7809ABV
FIXED 9V	0 to 125	1.5	2	TO-220		L7809ACV
FIXED 9V	0 to 125	1.5	4	ISOWATT220		L7809CP
FIXED 9V	0 to 125	1.5	4	TO-3		L7809CT
FIXED 9V	0 to 125	1.5	4	TO-220		L7809CV
FIXED 12V	-40 to 125	1.5	2	TO-220	UA7812QKC	L7812ABV
FIXED 12V	0 to 125	1.5	2	TO-220	UA7812CKC	L7812ACV
FIXED 12V	0 to 125	1.5	4	ISOWATT220		L7812CP
FIXED 12V	0 to 125	1.5	4	TO-3		L7812CT
FIXED 12V	0 to 125	1.5	4	TO-220	UA7812CKC	L7812CV
FIXED 15V	-40 to 125	1.5	2	TO-220		L7815ABV
FIXED 15V	0 to 125	1.5	2	TO-220	UA7815CKC	L7815ACV
FIXED 15V	0 to 125	1.5	4	ISOWATT220		L7815CP
FIXED 15V	0 to 125	1.5	4	TO-3		L7815CT
FIXED 15V	0 to 125	1.5	4	TO-220	UA7815CKC	L7815CV
FIXED 18V	-40 to 125	1.5	2	TO-220		L7818ABV
FIXED 18V	0 to 125	1.5	2	TO-220	UA7818CKC	L7818ACV
FIXED 18V	0 to 125	1.5	4	ISOWATT220		L7818CP
FIXED 18V	0 to 125	1.5	4	TO-3		L7818CT
FIXED 18V	0 to 125	1.5	4	TO-220	UA7818CKC	L7818CV
FIXED 20V	-40 to 125	1.5	2	TO-220		L7820ABV
FIXED 20V	0 to 125	1.5	2	TO-220		L7820ACV
FIXED 20V	0 to 125	1.5	4	ISOWATT220		L7820CP
FIXED 20V	0 to 125	1.5	4	TO-220		L7820C-T
FIXED 20V	0 to 125	1.5	4	TO-220		L7820CV
FIXED 24V	-40 to 125	1.5	2	TO-220		L7824ABV
FIXED 24V	0 to 125	1.5	2	TO-220	UA7824CKC	L7824ACV
FIXED 24V	0 to 125	1.5	4	ISOWATT220		L7824CP
FIXED 24V	0 to 125	1.5	4	TO-3		L7824CT
FIXED 24V	0 to 125	1.5	4	TO-220	UA7824CKC	L7824CV
FIXED 3.3V	0 to 125	0.1	4	SO-8		L78L33ACD
FIXED 3.3V	0 to 125	0.1	4	TO-92		L78L33ACZ
FIXED 5V	-40 to 125	0.1	4	SO-8	UA78L05ACD	L78L05ABD
FIXED 5V	-40 to 125	0.1	4	TO-92	UA78L05ACLP	L78L05ABZ
FIXED 5V	0 to 125	0.1	4	SO-8		L78L05ACD
FIXED 5V	0 to 125	0.1	4	TO-92		L78L05ACZ
FIXED 5V	0 to 125	0.1	8	SO-8	UA78L05CD	L78L05CD
FIXED 6V	-40 to 125	0.1	4	SO-8	UA78L06ACD	L78L06ABD
FIXED 6V	-40 to 125	0.1	4	TO-92	UA78L06ACLP	L78L06ABZ
FIXED 6V	0 to 125	0.1	4	SO-8		L78L06ACD
FIXED 6V	0 to 125	0.1	4	TO-92		L78L06ACZ

# TEXAS INSTRUMENTS to ST


Vol. Reg. Description	Tj °C	Iout A	Tol. %	Package	TEXAS INSTRU.	ST
FIXED 6V	0 to 125	0.1	8	SO-8	UA78L06CD	L78L06CD
FIXED 8V	-40 to 125	0.1	4	SO-8	UA78L08ACD	L78L08ABD
FIXED 8V	-40 to 125	0.1	4	TO-92	UA78L08ACD	L78L08ABZ
FIXED 8V	0 to 125	0.1	4	SO-8		L78L08ACD
FIXED 8V	0 to 125	0.1	4	TO-92		L78L08ACZ
FIXED 8V	0 to 125	0.1	8	SO-8	UA78L08CD	L78L08CD
FIXED 9V	-40 to 125	0.1	4	SO-8	UA78L09ACD	L78L09ABD
FIXED 9V	-40 to 125	0.1	4	TO-92	UA78L09ACLP	L78L09ABZ
FIXED 9V	0 to 125	0.1	4	SO-8		L78L09ACD
FIXED 9V	0 to 125	0.1	4	TO-92		L78L09ACZ
FIXED 9V	0 to 125	0.1	8	SO-8	UA78L09CD	L78L09CD
FIXED 12V	-40 to 125	0.1	4	SO-8	UA78L12ACD	L78L12ABD
FIXED 12V	-40 to 125	0.1	4	TO-92	UA78L12ACLP	L78L12ABZ
FIXED 12V	0 to 125	0.1	4	SO-8		L78L12ACD
FIXED 12V	0 to 125	0.1	4	TO-92		L78L12ACZ
FIXED 12V	0 to 125	0.1	8	SO-8	UA78L12CD	L78L12CD
FIXED 15V	-40 to 125	0.1	4	SO-8	UA78L15ACD	L78L15ABD
FIXED 15V	-40 to 125	0.1	4	TO-92	UA78L15ACLP	L78L15ABZ
FIXED 15V	0 to 125	0.1	4	SO-8		L78L15ACD
FIXED 15V	0 to 125	0.1	4	TO-92		L78L15ACZ
FIXED 15V	0 to 125	0.1	8	SO-8	UA78L15CD	L78L15CD
FIXED 18V	-40 to 125	0.1	4	SO-8	UA78L18ACD	L78L18ABD
FIXED 18V	-40 to 125	0.1	4	TO-92	UA78L18ACLP	L78L18ABZ
FIXED 18V	0 to 125	0.1	4	SO-8		L78L18ACD
FIXED 18V	0 to 125	0.1	4	TO-92		L78L18ACZ
FIXED 18V	0 to 125	0.1	8	SO-8	UA78L18CD	L78L18CD
FIXED 24V	-40 to 125	0.1	4	SO-8	UA78L24ACD	L78L24ABD
FIXED 24V	-40 to 125	0.1	4	TO-92	UA78L24ACLP	L78L24ABZ
FIXED 24V	0 to 125	0.1	4	SO-8		L78L24ACD
FIXED 24V	0 to 125	0.1	4	TO-92		L78L24ACZ
FIXED 24V	0 to 125	0.1	8	SO-8		L78L24CD
FIXED 24V	0 to 125	0.1	8	TO-92	UA78L24CD	L78L24ACZ
FIXED 5V	-40 to 125	0.5	2	DPAK		L78M05ABDT
FIXED 5V	-40 to 125	0.5	2	SOT-194		L78M05ABS
FIXED 5V	-40 to 125	0.5	2	TO-220		L78M05ABV
FIXED 5V	-40 to 125	0.5	2	SOT-82		L78M05ABX
FIXED 5V	0 to 125	0.5	2	DPAK		L78M05ACDT
FIXED 5V	0 to 125	0.5	2	SOT-194		L78M05ACS
FIXED 5V	0 to 125	0.5	4	DPAK		L78M05CDT
FIXED 5V	0 to 125	0.5	4	ISOWATT220		L78M05CP
FIXED 5V	0 to 125	0.5	4	SOT-194		L78M05CS
FIXED 5V	0 to 125	0.5	4	TO-220	UA78M05CKC	L78M05CV
FIXED 5V	0 to 125	0.5	4	SOT-82		L78M05CX
FIXED 6V	-40 to 125	0.5	2	DPAK		L78M06ABDT
FIXED 6V	-40 to 125	0.5	2	SOT-194		L78M06ABS
FIXED 6V	-40 to 125	0.5	2	TO-220		L78M06ABV
FIXED 6V	0 to 125	0.5	2	DPAK		L78M06ACDT
FIXED 6V	0 to 125	0.5	4	DPAK		L78M06CDT
FIXED 6V	0 to 125	0.5	4	ISOWATT220		L78M06CP
FIXED 6V	0 to 125	0.5	4	SOT-194		L78M06CS
FIXED 6V	0 to 125	0.5	4	TO-220	UA78M06CKC	L78M06CV
FIXED 6V	0 to 125	0.5	4	SOT-82		L78M06CX
FIXED 8V	-40 to 125	0.5	2	DPAK		L78M08ABDT
FIXED 8V	-40 to 125	0.5	2	SOT-194		L78M08ABS
FIXED 8V	-40 to 125	0.5	2	TO-220		L78M08ABV
FIXED 8V	0 to 125	0.5	2	DPAK		L78M08ACDT
FIXED 8V	0 to 125	0.5	4	DPAK		L78M08CDT
FIXED 8V	0 to 125	0.5	4	ISOWATT220		L78M08CP
FIXED 8V	0 to 125	0.5	4	SOT-194		L78M08CS
FIXED 8V	0 to 125	0.5	4	TO-220	UA78M08CKC	L78M08CV
FIXED 8V	0 to 125	0.5	4	SOT-82		L78M08CX
FIXED 9V	-40 to 125	0.5	2	DPAK		L78M09ABDT
FIXED 9V	-40 to 125	0.5	2	TO-220		L78M09ABV
FIXED 9V	0 to 125	0.5	2	DPAK		L78M09ACDT
FIXED 9V	0 to 125	0.5	4	DPAK		L78M09CDT
FIXED 9V	0 to 125	0.5	4	ISOWATT220		L78M09CP
FIXED 9V	0 to 125	0.5	4	SOT-194		L78M09CS

# TEXAS INSTRUMENTS to ST

Vol. Reg. Description	Tj °C	Iout A	Tol. %	Package	TEXAS INSTRU.	ST
FIXED 9V	0 to 125	0.5	4	TO-220	UA78M09CKC	L78M09CV
FIXED 9V	0 to 125	0.5	4	SOT-82		L78M09CX
FIXED 10V	-40 to 125	0.5	2	DPAK		L78M10ABDT
FIXED 10V	-40 to 125	0.5	2	TO-220		L78M10ABV
FIXED 10V	0 to 125	0.5	2	DPAK		L78M10ACDT
FIXED 10V	0 to 125	0.5	4	DPAK		L78M10CDT
FIXED 10V	0 to 125	0.5	4	ISOWATT220		L78M10CP
FIXED 10V	0 to 125	0.5	4	SOT-194		L78M10CS
FIXED 10V	0 to 125	0.5	4	TO-220	UA78M10CKC	L78M10CV
FIXED 10V	0 to 125	0.5	4	SOT-82		L78M10CX
FIXED 12V	-40 to 125	0.5	2	DPAK		L78M12ABDT
FIXED 12V	-40 to 125	0.5	2	SOT-194		L78M12ABS
FIXED 12V	-40 to 125	0.5	2	TO-220		L78M12ABV
FIXED 12V	0 to 125	0.5	2	DPAK		L78M12ACDT
FIXED 12V	0 to 125	0.5	4	DPAK		L78M12CDT
FIXED 12V	0 to 125	0.5	4	ISOWATT220		L78M12CP
FIXED 12V	0 to 125	0.5	4	SOT-194		L78M12CS
FIXED 12V	0 to 125	0.5	4	TO-220	UA78M12CKC	L78M12CV
FIXED 12V	0 to 125	0.5	4	SOT-82		L78M12CX
FIXED 15V	-40 to 125	0.5	2	DPAK		L78M15ABDT
FIXED 15V	-40 to 125	0.5	2	TO-220		L78M15ABV
FIXED 15V	0 to 125	0.5	2	DPAK		L78M15ACDT
FIXED 15V	0 to 125	0.5	4	DPAK		L78M15CDT
FIXED 15V	0 to 125	0.5	4	ISOWATT220		L78M15CP
FIXED 15V	0 to 125	0.5	4	SOT-194		L78M15CS
FIXED 15V	0 to 125	0.5	4	TO-220	UA78M15CKC	L78M15CV
FIXED 15V	0 to 125	0.5	4	SOT-82		L78M15CX
FIXED 18V	-40 to 125	0.5	2	DPAK		L78M18ABDT
FIXED 18V	-40 to 125	0.5	2	TO-220		L78M18ABV
FIXED 18V	0 to 125	0.5	2	DPAK		L78M18ACDT
FIXED 18V	0 to 125	0.5	4	DPAK		L78M18CDT
FIXED 18V	0 to 125	0.5	4	ISOWATT220		L78M18CP
FIXED 18V	0 to 125	0.5	4	SOT-194		L78M18CS
FIXED 18V	0 to 125	0.5	4	TO-220	UA78M18CKC	L78M18CV
FIXED 18V	0 to 125	0.5	4	SOT-82		L78M18CX
FIXED 20V	-40 to 125	0.5	2	DPAK		L78M20ABDT
FIXED 20V	-40 to 125	0.5	2	TO-220		L78M20ABV
FIXED 20V	0 to 125	0.5	2	DPAK		L78M20ACDT
FIXED 20V	0 to 125	0.5	4	DPAK		L78M20CDT
FIXED 20V	0 to 125	0.5	4	ISOWATT220		L78M20CP
FIXED 20V	0 to 125	0.5	4	SOT-194		L78M20CS
FIXED 20V	0 to 125	0.5	4	TO-220	UA78M20CKC	L78M20CV
FIXED 20V	0 to 125	0.5	4	SOT-82		L78M20CX
FIXED 24V	-40 to 125	0.5	2	DPAK		L78M24ABDT
FIXED 24V	-40 to 125	0.5	2	TO-220		L78M24ABV
FIXED 24V	0 to 125	0.5	2	DPAK		L78M24ACDT
FIXED 24V	0 to 125	0.5	4	DPAK		L78M24CDT
FIXED 24V	0 to 125	0.5	4	ISOWATT220		L78M24CP
FIXED 24V	0 to 125	0.5	4	SOT-194		L78M24CS
FIXED 24V	0 to 125	0.5	4	TO-220	UA78M24CKC	L78M24CV
FIXED 24V	0 to 125	0.5	4	SOT-82		L78M24CX
FIXED 5V	0 to 150	2.0	4	TO-3		L78S05CT
FIXED 5V	0 to 150	2.0	4	TO-220		L78S05CV
FIXED 7.5V	0 to 150	2.0	4	TO-3		L78S75CT
FIXED 7.5V	0 to 150	2.0	4	TO-220		L78S75CV
FIXED 9V	0 to 150	2.0	4	TO-3		L78S09CT
FIXED 9V	0 to 150	2.0	4	TO-220		L78S09CV
FIXED 10V	0 to 150	2.0	4	TO-3		L78S10CT
FIXED 10V	0 to 150	2.0	4	TO-220		L78S10CV
FIXED 12V	0 to 150	2.0	4	TO-3		L78S12CT
FIXED 12V	0 to 150	2.0	4	TO-220		L78S12CV
FIXED 15V	0 to 150	2.0	4	TO-3		L78S15CT
FIXED 15V	0 to 150	2.0	4	TO-220		L78S15CV
FIXED 18V	0 to 150	2.0	4	TO-3		L78S18CT
FIXED 18V	0 to 150	2.0	4	TO-220		L78S18CV
FIXED 24V	0 to 150	2.0	4	TO-3		L78S24CT
FIXED 24V	0 to 150	2.0	4	TO-220		L78S24CV



# TEXAS INSTRUMENTS to ST

Vol. Reg. Description	Tj °C	Iout A	Tol. %	Package	TEXAS INSTRU.	
5V NEG. FIXED	0 to 125	1.5	2	TO-220		L7905ACV
5V NEG. FIXED	0 to 125	1.5	4	ISOWATT220		L7905CP
5V NEG. FIXED	0 to 150	1.5	4	TO-3		L7905CT
5V NEG. FIXED	0 to 125	1.5	4	TO-220		L7905CV
5.2V NEG.FIXED	0 to 125	1.5	2	TO-220		L7952ACV
5.2V NEG.FIXED	0 to 150	1.5	4	TO-3		L7952CT
5.2V NEG.FIXED	0 to 125	1.5	4	TO-220		L7952CV
6V NEG. FIXED	0 to 150	1.5	4	TO-3		L7906CT
6V NEG. FIXED	0 to 125	1.5	4	TO-220		L7906CV
8V NEG. FIXED	0 to 125	1.5	2	TO-220		L7908ACV
8V NEG. FIXED	0 to 150	1.5	4	TO-3		L7908CT
8V NEG. FIXED	0 to 125	1.5	4	TO-220		L7908CV
12V NEG. FIXED	0 to 125	1.5	2	TO-220		L7912ACV
12V NEG. FIXED	0 to 125	1.5	4	ISOWATT220		L7912CP
12V NEG. FIXED	0 to 150	1.5	4	TO-3		L7912CT
12V NEG. FIXED	0 to 125	1.5	4	TO-220		L7912CV
15V NEG. FIXED	0 to 125	1.5	2	TO-220		L7915ACV
15V NEG. FIXED	0 to 150	1.5	4	TO-3		L7915CT
15V NEG. FIXED	0 to 125	1.5	4	TO-220		L7915CV
18V NEG. FIXED	0 to 125	1.5	2	TO-220		L7918ACV
18V NEG. FIXED	0 to 150	1.5	4	TO-3		L7918CT
18V NEG. FIXED	0 to 125	1.5	4	TO-220		L7918CV
20V NEG. FIXED	0 to 125	1.5	2	TO-220		L7920ACV
20V NEG. FIXED	0 to 150	1.5	4	TO-3		L7920CT
20V NEG. FIXED	0 to 125	1.5	4	TO-220		L7920CV
22V NEG. FIXED	0 to 150	1.5	4	TO-3		L7922CT
22V NEG. FIXED	0 to 125	1.5	4	TO-220		L7922CV
24V NEG. FIXED	0 to 125	1.5	2	TO-220		L7924ACV
24V NEG. FIXED	0 to 150	1.5	4	TO-3		L7924CT
24V NEG. FIXED	0 to 125	1.5	4	TO-220		L7924CV
5V NEG. FIXED	-40 to 125	0.1	4	SO-8		L79L05ABD
5V NEG. FIXED	-40 to 125	0.1	4	TO-92		L79L05ABZ
5V NEG. FIXED	0 to 125	0.1	4	SO-8		L79L05ACD
5V NEG. FIXED	0 to 125	0.1	4	TO-92		L79L05ACZ
5V NEG. FIXED	0 to 125	0.1	8	SO-8		L79L05CD
6V NEG.FIXED	-40 to 125	0.1	4	SO-8		L79L06ABD
6V NEG.FIXED	-40 to 125	0.1	4	TO-92		L679L06ABZ
6V NEG.FIXED	0 to 125	0.1	4	SO-8		L79L06ACD
6V NEG.FIXED	0 to 125	0.1	4	TO-92		L79L06ACZ
6V NEG.FIXED	0 to 125	0.1	8	SO-8		L79L06CD
8V NEG.FIXED	-40 to 125	0.1	4	SO-8		L79L08ABD
8V NEG.FIXED	-40 to 125	0.1	4	TO-92		L79L08ABZ
8V NEG.FIXED	0 to 125	0.1	4	SO-8		L79L08ACD
8V NEG.FIXED	0 to 125	0.1	4	TO-92		L79L08ACZ
8V NEG.FIXED	0 to 125	0.1	8	SO-8		L79L08CD
9V NEG.FIXED	-40 to 125	0.1	4	SO-8		L79L09ABD
9V NEG.FIXED	-40 to 125	0.1	4	TO 92		L79L09ABZ
9V NEG.FIXED	0 to 125	0.1	4	SO-8		L79L09ACD
9V NEG.FIXED	0 to 125	0.1	4	TO-92		L79L09ACZ
9V NEG.FIXED	0 to 125	0.1	8	SO-8		L79L09CD
12V NEG.FIXED	-40 to 125	0.1	4	SO-8		L79L12ABD
12V NEG.FIXED	-40 to 125	0.1	4	TO-92		L79L12ABZ
12V NEG.FIXED	0 to 125	0.1	4	SO-8		L79L12ACD
12V NEG.FIXED	0 to 125	0.1	4	TO-92		L79L12ACZ
12V NEG.FIXED	0 to 125	0.1	8	SO-8		L79L12CD
15V NEG.FIXED	-40 to 125	0.1	4	SO-8		L79L15ABD
15V NEG.FIXED	-40 to 125	0.1	4	TO-92		L79L15ABZ
15V NEG.FIXED	0 to 125	0.1	4	SO-8		L79L15ACD
15V NEG.FIXED	0 to 125	0.1	4	TO-92		L79L15ACZ
15V NEG.FIXED	0 to 125	0.1	8	SO-8		L79L15CD
2.5V LOW DROP	0 to 125	0.8	1	DPAK		LD1117DT25
2.5V LOW DROP	0 to 125	0.8	2	DPAK		LD1117DT25C
2.85V LOW DROP	0 to 125	0.8	1	DPAK		LD1117DT285
2.85V LOW DROP	0 to 125	0.8	2	DPAK		LD1117DT285C
3V LOW DROP	0 to 125	0.8	1	DPAK		LD1117DT30
3V LOW DROP	0 to 125	0.8	2	DPAK		LD1117DT30C
3.3V LOW DROP	0 to 125	0.8	1	DPAK		LD1117DT33

# TEXAS INSTRUMENTS to ST

Vol. Reg. Description	Tj °C	Iout A	Tol. %	Package	TEXAS INSTRU.	ST
3.3V LOW DROP	0 to 125	0.8	2	DPAK		LD1117DT33C
5V LOW DROP	0 to 125	0.8	1	DPAK		LD1117DT50
5V LOW DROP	0 to 125	0.8	2	DPAK		LD1117DT50C
2.5V LOW DROP	0 to 125	0.8	1	TO-220		LD1117V25
2.5V LOW DROP	0 to 125	0.8	2	TO-220		LD1117V25C
2.85V LOW DROP	0 to 125	0.8	1	TO-220		LD1117V285
2.85V LOW DROP	0 to 125	0.8	2	TO-220		LD1117V285C
3V LOW DROP	0 to 125	0.8	1	TO-220		LD1117V30
3V LOW DROP	0 to 125	0.8	2	TO-220		LD1117V30C
3.3V LOW DROP	0 to 125	0.8	1	TO-220		LD1117V33
3.3V LOW DROP	0 to 125	0.8	2	TO-220		LD1117V33C
5V LOW DROP	0 to 125	0.8	1	TO-220		LD1117V50
5V LOW DROP	0 to 125	0.8	2	TO-220		LD1117V50C
2.5V L. D./L. QUIE.	-40 to 125	0.1	3	SO-8		LK115D25
3V L. D./L. QUIE.	-40 to 125	0.1	3	SO-8		LK115D30
3.3V L. D./L. QUIE.	-40 to 125	0.1	3	SO-8		LK115D33
4V L. D./L. QUIE.	-40 to 125	0.1	3	SO-8		LK115D40
4.75V L. D./L. QUIE.	-40 to 125	0.1	3	SO-8		LK115D47
4.85V L. D./L. QUIE.	-40 to 125	0.1	3	SO-8		LK115D48
5V L. D./L. QUIE.	-40 to 125	0.1	3	SO-8		LK115D50
1.2V-37V ADJ.	-55 to 150	0.5	4	TO-39		LM117H
1.2V-37V ADJ.	-55 to 150	1.5	4	TO-3		LM117K
FIXED 5V	-55 to 150	3.0	4	TO-3		LM123K
1.2V-37V A. N.	-55 to 150	1.5	4	TO-39		LM137H
1.2V-37V A. N.	-55 to 150	1.5	4	TO-3		LM137K
1.2V-32V ADJ.	-55 to 150	5.0	4	TO-3		LM138K
1.2V-32V ADJ.	-55 to 150	3.0	4	TO-3		LM150K
1.2V-37V ADJ.	-25 to 150	0.5	4	TO-39		LM217H
1.2V-37V ADJ.	-25 to 150	1.5	4	TO-3		LM217K
1.2V-37V ADJ.	-25 to 150	0.1	4	SO-8		LM217LD
1.2V-37V ADJ.	-25 to 150	0.1	4	TO-92		LM217LZ
1.2V-37V ADJ.	-25 to 150	1.5	4	TO-220		LM217T
FIXED 5V	-25 to 150	3.0	4	TO-3		LM223K
1.2V-37V A. N.	-25 to 150	0.5	4	TO-39		LM237H
1.2V-37V A. N.	-25 to 150	1.5	4	TO-3		LM237K
1.2V-37V A. N.	-25 to 150	1.5	4	TO-220		LM237SP
1.2V-32V ADJ	-25 to 150	5.0	4	TO-3		LM238K
1.2V-32V ADJ	-25 to 150	3.0	4	TO-3		LM250K
1.2V-37V ADJ	0 to 125	0.5	4	TO-39		LM317H
1.2V-37V ADJ	0 to 125	1.5	4	TO-3		LM317K
1.2V-37V ADJ	0 to 125	0.1	4	SO-8		LM317LD
1.2V-37V ADJ	0 to 125	0.1	4	TO-92		LM317LZ
1.2V-37V ADJ	0 to 125	0.5	4	DPAK		LM317MDT
1.2V-37V ADJ	0 to 125	0.5	4	TO-220		LM317MT
1.2V-37V ADJ	0 to 125	1.5	4	TO-220		LM317T
FIXED 5V	0 to 125	0.5	4	TO-92		LM323H
FIXED 5V	0 to 125	3.0	4	TO-3		LM323K
FIXED 5V	0 to 125	1.5	4	TO-220		LM323T
1.2V-37V A. N.	0 to 125	1.5	4	TO-39		LM337H
1.2V-37V A. N.	0 to 125	1.5	4	TO-3		LM337K
1.2V-37V A. N.	0 to 125	1.5	4	TO-220		LM337SP
1.2V-32V ADJ.	0 to 125	5.0	4	TO-3		LM338K
1.2V-32V ADJ.	0 to 150	3.0	4	TO-3		LM350K
3-37V ADJ.	0 to 125	3.0	4	SO-14		LM723ACD
3-37V ADJ.	0 to 125	0.15	4	SO-14	UA723MD	LM723CD
3-37V ADJ.	0 to 125	0.15	4	TO-100		LM723CH
3-37V ADJ.	0 to 125	0.15	4	Plastic Dil 14	UA723MN	LM723CN
3-37V ADJ.	-25 to 150	0.15	4	TO-100		LM723H


# TOSHIBA to ST

Vol. Reg. Description	Tj °C	Iout A	Tol. %	Package	TOSHIBA	ST
5V LOW DROP	-40 to 150	1.5	2	TO-220		L4940V5
8.5V LOW DROP	-40 to 150	1.5	2	TO-220		L4940V85
10V LOW DROP	-40 to 150	1.5	2	TO-220		L4940V10
12V LOW DROP	-40 to 150	1.5	2	TO-220		L4940V12
5V LOW DROP	-40 to 150	1.0	4	DPAK		L4941BDT
5V LOW DROP	-40 to 150	1.0	4	SOT-194		L4941BS
5V LOW DROP	-40 to 150	1.0	4	TO-220		L4941BV
5V LOW DROP	-40 to 150	1.0	4	SOT-82		L4941BX
FIXED 5V	-40 to 125	1.5	2	TO-220		L7805ABV
FIXED 5V	0 to 125	1.5	2	TO-220		L7805ACV
FIXED 5V	0 to 125	1.5	4	ISOWATT220		L7805CP
FIXED 5V	0 to 125	1.5	4	TO-3		L7805CT
FIXED 5V	0 to 125	1.5	4	TO-220	TA7805AP	L7805CV
FIXED 5.2V	0 to 125	1.5	4	ISOWATT220		L7852CV
FIXED 6V	-40 to 125	1.5	2	TO-220		L7806ABV
FIXED 6V	0 to 125	1.5	2	TO-220		L7806ACV
FIXED 6V	0 to 125	1.5	4	ISOWATT220		L7806CP
FIXED 6V	0 to 125	1.5	4	TO-3		L7806CT
FIXED 6V	0 to 125	1.5	4	TO-220	TA7806AP	L7806CV
FIXED 8V	-40 to 125	1.5	2	TO-220		L7808ABV
FIXED 8V	0 to 125	1.5	2	TO-220		L7808ACV
FIXED 8V	0 to 125	1.5	4	ISOWATT220		L7808CP
FIXED 8V	0 to 125	1.5	4	TO-3		L7808CT
FIXED 8V	0 to 125	1.5	4	TO-220	TA7808AP	L7808CV
FIXED 8.5V	0 to 125	1.5	4	TO-3		L7885CT
FIXED 8.5V	0 to 125	1.5	4	TO-220		L7885CV
FIXED 9V	-40 to 125	1.5	2	TO-220		L7809ABV
FIXED 9V	0 to 125	1.5	2	TO-220		L7809ACV
FIXED 9V	0 to 125	1.5	4	ISOWATT220		L7809CP
FIXED 9V	0 to 125	1.5	4	TO-3		L7809CT
FIXED 9V	0 to 125	1.5	4	TO-220	TA7809AP	L7809CV
FIXED 12V	-40 to 125	1.5	2	TO-220		L7812ABV
FIXED 12V	0 to 125	1.5	2	TO-220		L7812ACV
FIXED 12V	0 to 125	1.5	4	ISOWATT220		L7812CP
FIXED 12V	0 to 125	1.5	4	TO-3		L7812CT
FIXED 12V	0 to 125	1.5	4	TO-220	TA7812AP	L7812CV
FIXED 15V	-40 to 125	1.5	2	TO-220		L7815ABV
FIXED 15V	0 to 125	1.5	2	TO-220		L7815ACV
FIXED 15V	0 to 125	1.5	4	ISOWATT220		L7815CP
FIXED 15V	0 to 125	1.5	4	TO-3		L7815CT
FIXED 15V	0 to 125	1.5	4	TO-220	TA7815AP	L7815CV
FIXED 18V	-40 to 125	1.5	2	TO-220		L7818ABV
FIXED 18V	0 to 125	1.5	2	TO-220		L7818ACV
FIXED 18V	0 to 125	1.5	4	ISOWATT220		L7818CP
FIXED 18V	0 to 125	1.5	4	TO-3		L7818CT
FIXED 18V	0 to 125	1.5	4	TO-220	TA7818AP	L7818CV
FIXED 20V	-40 to 125	1.5	2	TO-220		L7820ABV
FIXED 20V	0 to 125	1.5	2	TO-220		L7820ACV
FIXED 20V	0 to 125	1.5	4	ISOWATT220		L7820CP
FIXED 20V	0 to 125	1.5	4	TO-220		L7820C-T
FIXED 20V	0 to 125	1.5	4	TO-220	TA7820AP	L7820CV
FIXED 24V	-40 to 125	1.5	2	TO-220		L7824ABV
FIXED 24V	0 to 125	1.5	2	TO-220		L7824ACV
FIXED 24V	0 to 125	1.5	4	ISOWATT220		L7824CP
FIXED 24V	0 to 125	1.5	4	TO-3		L7824CT
FIXED 24V	0 to 125	1.5	4	TO-220	TA7824AP	L7824CV
FIXED 3.3V	0 to 125	0.1	4	SO-8		L78L33ACD
FIXED 3.3V	0 to 125	0.1	4	TO-92		L78L33ACZ
FIXED 5V	-40 to 125	0.1	4	SO-8		L78L05ABD
FIXED 5V	-40 to 125	0.1	4	TO-92		L78L05AB
FIXED 5V	0 to 125	0.1	4	SO-8		L78L05ACD
FIXED 5V	0 to 125	0.1	4	TO-92	TA78L05S	L78L05ACZ
FIXED 5V	0 to 125	0.1	8	SO-8		L78L05CD
FIXED 6V	-40 to 125	0.1	4	SO-8		L78L06ABD
FIXED 6V	-40 to 125	0.1	4	TO-92		L78L06ABZ
FIXED 6V	0 to 125	0.1	4	SO-8		L78L06ACD
FIXED 6V	0 to 125	0.1	4	TO-92		L78L06ACZ

# TOSHIBA to ST

Vol. Reg. Description	Tj °C	Iout A	Tol. %	Package	TOSHIBA	ST
FIXED 8V	-40 to 125	0.1	4	SO-8		L78L08ABD
FIXED 8V	-40 to 125	0.1	4	TO-92		L78L08ABZ
FIXED 8V	0 to 125	0.1	4	SO-8		L78L08ACD
FIXED 8V	0 to 125	0.1	4	TO-92		L78L08ACZ
FIXED 8V	0 to 125	0.1	8	SO-8		L78L08CD
FIXED 9V	-40 to 125	0.1	4	SO-8		L78L09ABD
FIXED 9V	-40 to 125	0.1	4	TO-92		L78L09ABZ
FIXED 9V	0 to 125	0.1	4	SO-8		L78L09ACD
FIXED 9V	0 to 125	0.1	4	TO-92	TA78L09S	L78L09ACZ
FIXED 9V	0 to 125	0.1	8	SO-8		L78L09CD
FIXED 12V	-40 to 125	0.1	4	SO-8		L78L12ABD
FIXED 12V	-40 to 125	0.1	4	TO-92	TA78L12S	L78L12ABZ
FIXED 12V	0 to 125	0.1	4	SO-8		L78L12ACD
FIXED 12V	0 to 125	0.1	4	TO-92		L78L12ACZ
FIXED 12V	0 to 125	0.1	8	SO-8		L78L12CD
FIXED 15V	-40 to 125	0.1	4	SO-8		L78L15ABD
FIXED 15V	-40 to 125	0.1	4	TO-92		L78L15ABZ
FIXED 15V	0 to 125	0.1	4	SO-8		L78L15ACD
FIXED 15V	0 to 125	0.1	4	TO-92	TA78L15S	L78L15ACZ
FIXED 15V	0 to 125	0.1	8	SO-8		L78L15CD
FIXED 18V	-40 to 125	0.1	4	SO-8		L78L18ABD
FIXED 18V	-40 to 125	0.1	4	TO-92		L78L18ABZ
FIXED 18V	0 to 125	0.1	4	SO-8		L78L18ACD
FIXED 18V	0 to 125	0.1	4	TO-92		L78L18ACZ
FIXED 18V	0 to 125	0.1	8	SO-8		L78L18CD
FIXED 24V	-40 to 125	0.1	4	SO-8		L78L24ABD
FIXED 24V	-40 to 125	0.1	4	TO-92		L78L24ABZ
FIXED 24V	0 to 125	0.1	4	SO-8		L78L24ACD
FIXED 24V	0 to 125	0.1	4	TO-92		L78L24ACZ
FIXED 24V	0 to 125	0.1	8	SO-8		L78L24CD
FIXED 24V	0 to 125	0.1	8	TO-92		L78L24ACZ
FIXED 5V	-40 to 125	0.5	2	DPAK		L78M05ABDT
FIXED 5V	-40 to 125	0.5	2	SOT-194		L78M05ABS
FIXED 5V	-40 to 125	0.5	2	TO-220		L78M05ABV
FIXED 5V	-40 to 125	0.5	2	SOT-82		L78M05ABX
FIXED 5V	0 to 125	0.5	2	DPAK		L78M05ACDT
FIXED 5V	0 to 125	0.5	2	SOT-194		L78M05ACS
FIXED 5V	0 to 125	0.5	4	DPAK		L78M05CDT
FIXED 5V	0 to 125	0.5	4	ISOWATT220		L78M05CP
FIXED 5V	0 to 125	0.5	4	SOT-194		L78M05CS
FIXED 5V	0 to 125	0.5	4	TO-220	TA78M05P	L78M05CV
FIXED 5V	0 to 125	0.5	4	SOT-82		L78M05CX
FIXED 6V	-40 to 125	0.5	2	DPAK		L78M06ABDT
FIXED 6V	-40 to 125	0.5	2	SOT-194		L78M06ABS
FIXED 6V	-40 to 125	0.5	2	TO-220		L78M06ABV
FIXED 6V	0 to 125	0.5	2	DPAK		L78M06ACDT
FIXED 6V	0 to 125	0.5	4	DPAK		L78M06CDT
FIXED 6V	0 to 125	0.5	4	ISOWATT220		L78M06CP
FIXED 6V	0 to 125	0.5	4	SOT-194		L78M06CS
FIXED 6V	0 to 125	0.5	4	TO-220	TA78M06P	L78M06CV
FIXED 6V	0 to 125	0.5	4	SOT-82		L78M06CX
FIXED 8V	-40 to 125	0.5	2	DPAK		L78M08ABDT
FIXED 8V	-40 to 125	0.5	2	SOT-194		L78M08ABS
FIXED 8V	-40 to 125	0.5	2	TO-220		L78M08ABV
FIXED 8V	0 to 125	0.5	2	DPAK		L78M08ACDT
FIXED 8V	0 to 125	0.5	4	DPAK		L78M08CDT
FIXED 8V	0 to 125	0.5	4	ISOWATT220		L78M08CP
FIXED 8V	0 to 125	0.5	4	SOT-194		L78M08CS
FIXED 8V	0 to 125	0.5	4	TO-220	TA78M08P	L78M08CV
FIXED 8V	0 to 125	0.5	4	SOT-82		L78M08CX
FIXED 9V	-40 to 125	0.5	2	DPAK		L78M09ABDT
FIXED 9V	-40 to 125	0.5	2	TO-220		L78M09ABV
FIXED 9V	0 to 125	0.5	2	DPAK		L78M09ACDT
FIXED 9V	0 to 125	0.5	4	DPAK		L78M09CDT
FIXED 9V	0 to 125	0.5	4	ISOWATT220		L78M09CP
FIXED 9V	0 to 125	0.5	4	SOT-194		L78M09CS
FIXED 9V	0 to 125	0.5	4	TO-220	TA78M09P	L78M09CV

# TOSHIBA to ST

Vol. Reg. Description	Tj °C	Iout A	Tol. %	Package	TOSHIBA	
FIXED 9V	0 to 125	0.5	4	SOT-82		L78M09C
FIXED 10V	-40 to 125	0.5	2	DPAK		L78M10ABDT
FIXED 10V	-40 to 125	0.5	2	TO-220		L78M10ABV
FIXED 10V	0 to 125	0.5	2	DPAK		L78M10ACDT
FIXED 10V	0 to 125	0.5	4	DPAK		L78M10CDT
FIXED 10V	0 to 125	0.5	4	ISOWATT220		L78M10CP
FIXED 10V	0 to 125	0.5	4	SOT-194		L78M10CS
FIXED 10V	0 to 125	0.5	4	TO-220	TA78M10P	L78M10CV
FIXED 10V	0 to 125	0.5	4	SOT-82		L78M10CX
FIXED 12V	-40 to 125	0.5	2	DPAK		L78M12ABDT
FIXED 12V	-40 to 125	0.5	2	SOT-194		L78M12ABS
FIXED 12V	-40 to 125	0.5	2	TO-220		L78M12ABV
FIXED 12V	0 to 125	0.5	2	DPAK		L78M12ACDT
FIXED 12V	0 to 125	0.5	4	DPAK		L78M12CDT
FIXED 12V	0 to 125	0.5	4	ISOWATT220		L78M12CP
FIXED 12V	0 to 125	0.5	4	SOT-194		L78M12CS
FIXED 12V	0 to 125	0.5	4	TO-220	TA78M12P	L78M12CV
FIXED 12V	0 to 125	0.5	4	SOT-82		L78M12CX
FIXED 15V	-40 to 125	0.5	2	DPAK		L78M15ABDT
FIXED 15V	-40 to 125	0.5	2	TO-220		L78M15ABV
FIXED 15V	0 to 125	0.5	2	DPAK		L78M15ACDT
FIXED 15V	0 to 125	0.5	4	DPAK		L78M15CDT
FIXED 15V	0 to 125	0.5	4	ISOWATT220		L78M15CP
FIXED 15V	0 to 125	0.5	4	SOT-194		L78M15CS
FIXED 15V	0 to 125	0.5	4	TO-220	TA78M15P	L78M15CV
FIXED 15V	0 to 125	0.5	4	SOT-82		L78M15CX
FIXED 18V	-40 to 125	0.5	2	DPAK		L78M18ABDT
FIXED 18V	-40 to 125	0.5	2	TO-220		L78M18ABV
FIXED 18V	0 to 125	0.5	2	DPAK		L78M18ACDT
FIXED 18V	0 to 125	0.5	4	DPAK		L78M18CDT
FIXED 18V	0 to 125	0.5	4	ISOWATT220		L78M18CP
FIXED 18V	0 to 125	0.5	4	SOT-194		L78M18CS
FIXED 18V	0 to 125	0.5	4	TO-220	TA78M18P	L78M18CV
FIXED 18V	0 to 125	0.5	4	SOT-82		L78M18CX
FIXED 20V	-40 to 125	0.5	2	DPAK		L78M20ABDT
FIXED 20V	-40 to 125	0.5	2	TO-220		L78M20ABV
FIXED 20V	0 to 125	0.5	2	DPAK		L78M20ACDT
FIXED 20V	0 to 125	0.5	4	DPAK		L78M20CDT
FIXED 20V	0 to 125	0.5	4	ISOWATT220		L78M20CP
FIXED 20V	0 to 125	0.5	4	SOT-194		L78M20CS
FIXED 20V	0 to 125	0.5	4	TO-220	TA78M20P	L78M20CV
FIXED 20V	0 to 125	0.5	4	SOT-82		L78M20CX
FIXED 24V	-40 to 125	0.5	2	DPAK		L78M24ABDT
FIXED 24V	-40 to 125	0.5	2	TO-220		L78M24ABV
FIXED 24V	0 to 125	0.5	2	DPAK		L78M24ACDT
FIXED 24V	0 to 125	0.5	4	DPAK		L78M24CDT
FIXED 24V	0 to 125	0.5	4	ISOWATT220		L78M24CP
FIXED 24V	0 to 125	0.5	4	SOT-194		L78M24CS
FIXED 24V	0 to 125	0.5	4	TO-220	TA78M24P	L78M24CV
FIXED 24V	0 to 125	0.5	4	SOT-82		L78M24CX
FIXED 5V	0 to 150	2.0	4	TO-3		L78S05CT
FIXED 5V	0 to 150	2.0	4	TO-220	TA7805S	L78S05CV
FIXED 7.5V	0 to 150	2.0	4	TO-3		L78S75CT
FIXED 7.5V	0 to 150	2.0	4	TO-220		L78S75CV
FIXED 9V	0 to 150	2.0	4	TO-3		L78S09CT
FIXED 9V	0 to 150	2.0	4	TO-220	TA7809S	L78S09CV
FIXED 10V	0 to 150	2.0	4	TO-3		L78S10CT
FIXED 10V	0 to 150	2.0	4	TO-220	TA7810S	L78S10CV
FIXED 12V	0 to 150	2.0	4	TO-3		L78S12CT
FIXED 12V	0 to 150	2.0	4	TO-220	TA7812S	L78S12CV
FIXED 15V	0 to 150	2.0	4	TO-3		L78S15CT
FIXED 15V	0 to 150	2.0	4	TO-220	TA7815S	L78S15CV
FIXED 18V	0 to 150	2.0	4	TO-3		L78S18CT
FIXED 18V	0 to 150	2.0	4	TO-220	TA7818S	L78S18CV
FIXED 24V	0 to 150	2.0	4	TO-3		L78S24CT
FIXED 24V	0 to 150	2.0	4	TO-220	TA7824S	L78S24CV
5V NEG. FIXED	0 to 125	1.5	2	TO-220		L7905ACV



# TOSHIBA to ST

Vol. Reg. Description	Tj °C	Iout A	Tol. %	Package	TOSHIBA	ST
5V NEG. FIXED	0 to 125	1.5	4	ISOWATT220		L7905CP
5V NEG. FIXED	0 to 150	1.5	4	TO-3		L7905CT
5V NEG. FIXED	0 to 125	1.5	4	TO-220	TA79005P	L7905CV
5.2V NEG.FIXED	0 to 125	1.5	2	TO-220		L7952ACV
5.2V NEG.FIXED	0 to 150	1.5	4	TO-3		L7952CT
5.2V NEG.FIXED	0 to 125	1.5	4	TO-220		L7952CV
6V NEG. FIXED	0 to 150	1.5	4	TO-3		L7906CT
6V NEG. FIXED	0 to 125	1.5	4	TO-220	TA79006P	L7906CV
8V NEG. FIXED	0 to 125	1.5	2	TO-220		L7908ACV
8V NEG. FIXED	0 to 150	1.5	4	TO-3		L7908CT
8V NEG. FIXED	0 to 125	1.5	4	TO-220	TA79008P	L7908CV
12V NEG. FIXED	0 to 125	1.5	2	TO-220		L7912ACV
12V NEG. FIXED	0 to 125	1.5	4	ISOWATT220		L7912CP
12V NEG. FIXED	0 to 150	1.5	4	TO-3		L7912CT
12V NEG. FIXED	0 to 125	1.5	4	TO-220	TA79012P	L7912CV
15V NEG. FIXED	0 to 125	1.5	2	TO-220		L7915ACV
15V NEG. FIXED	0 to 150	1.5	4	TO-3		L7915CT
15V NEG. FIXED	0 to 125	1.5	4	TO-220	TA79015P	L7915CV
18V NEG. FIXED	0 to 125	1.5	2	TO-220		L7918ACV
18V NEG. FIXED	0 to 150	1.5	4	TO-3		L7918CT
18V NEG. FIXED	0 to 125	1.5	4	TO-220	TA79018P	L7918CV
20V NEG. FIXED	0 to 125	1.5	2	TO-220		L7920ACV
20V NEG. FIXED	0 to 150	1.5	4	TO-3		L7920CT
20V NEG. FIXED	0 to 125	1.5	4	TO-220	TA79020P	L7920CV
22V NEG. FIXED	0 to 150	1.5	4	TO-3		L7922CT
22V NEG. FIXED	0 to 125	1.5	4	TO-220		L7922CV
24V NEG. FIXED	0 to 125	1.5	2	TO-220		L7924ACV
24V NEG. FIXED	0 to 150	1.5	4	TO-3		L7924CT
24V NEG. FIXED	0 to 125	1.5	4	TO-220	TA79024P	L7924CV
5V NEG. FIXED	-40 to 125	0.1	4	SO-8		L79L05ABD
5V NEG. FIXED	-40 to 125	0.1	4	TO-92	TA79L005P	L79L05ABZ
5V NEG. FIXED	0 to 125	0.1	4	SO-8		L79L05ACD
5V NEG. FIXED	0 to 125	0.1	4	TO-92	TA79L005P	L79L05ACZ
5V NEG. FIXED	0 to 125	0.1	8	SO-8		L79L05CD
6V NEG.FIXED	-40 to 125	0.1	4	SO-8		L79L06ABD
6V NEG.FIXED	-40 to 125	0.1	4	TO-92	TA79L006P	L679L06ABZ
6V NEG.FIXED	0 to 125	0.1	4	SO-8		L79L06ACD
6V NEG.FIXED	0 to 125	0.1	4	TO-92	TA79L006P	L79L06ACZ
6V NEG.FIXED	0 to 125	0.1	8	SO-8		L79L06CD
8V NEG.FIXED	-40 to 125	0.1	4	SO-8		L79L08ABD
8V NEG.FIXED	-40 to 125	0.1	4	TO-92	TA79L008P	L79L08ABZ
8V NEG.FIXED	0 to 125	0.1	4	SO-8		L79L08ACD
8V NEG.FIXED	0 to 125	0.1	4	TO-92	TA79L008P	L79L08ACZ
8V NEG.FIXED	0 to 125	0.1	8	SO-8		L79L08CD
9V NEG.FIXED	-40 to 125	0.1	4	SO-8		L79L09ABD
9V NEG.FIXED	-40 to 125	0.1	4	TO 92	TA79L009P	L79L09ABZ
9V NEG.FIXED	0 to 125	0.1	4	SO-8		L79L09ACD
9V NEG.FIXED	0 to 125	0.1	4	TO-92	TA79L009P	L79L09ACZ
9V NEG.FIXED	0 to 125	0.1	8	SO-8		L79L09CD
12V NEG.FIXED	-40 to 125	0.1	4	SO-8		L79L12ABD
12V NEG.FIXED	-40 to 125	0.1	4	TO-92	TA79L012P	L79L12ABZ
12V NEG.FIXED	0 to 125	0.1	4	SO-8		L79L12ACD
12V NEG.FIXED	0 to 125	0.1	4	TO-92	TA79L012P	L79L12ACZ
12V NEG.FIXED	0 to 125	0.1	8	SO-8		L79L12CD
15V NEG.FIXED	-40 to 125	0.1	4	SO-8		L79L15ABD
15V NEG.FIXED	-40 to 125	0.1	4	TO-92	TA79L015P	L79L15ABZ
15V NEG.FIXED	0 to 125	0.1	4	SO-8		L79L15ACD
15V NEG.FIXED	0 to 125	0.1	4	TO-92	TA79L015P	L79L15ACZ
15V NEG.FIXED	0 to 125	0.1	8	SO-8		L79L15CD
2.5V LOW DROP	0 to 125	0.8	1	DPAK		LD1117DT25
2.5V LOW DROP	0 to 125	0.8	2	DPAK		LD1117DT25C
2.85V LOW DROP	0 to 125	0.8	1	DPAK		LD1117DT285
2.85V LOW DROP	0 to 125	0.8	2	DPAK		LD1117DT285C
3V LOW DROP	0 to 125	0.8	1	DPAK		LD1117DT30
3V LOW DROP	0 to 125	0.8	2	DPAK		LD1117DT30C
3.3V LOW DROP	0 to 125	0.8	1	DPAK		LD1117DT33
3.3V LOW DROP	0 to 125	0.8	2	DPAK		LD1117DT33C

# TOSHIBA to ST

Vol. Reg. Description	Tj °C	Iout A	Tol. %	Package	TOSHIBA	ST
5V LOW DROP	0 to 125	0.8	1	DPAK		LD1117DT50
5V LOW DROP	0 to 125	0.8	2	DPAK		LD1117DT50C
2.5V LOW DROP	0 to 125	0.8	1	TO-220		LD1117V25
2.5V LOW DROP	0 to 125	0.8	2	TO-220		LD1117V25C
2.85V LOW DROP	0 to 125	0.8	1	TO-220		LD1117V285
2.85V LOW DROP	0 to 125	0.8	2	TO-220		LD1117V285C
3V LOW DROP	0 to 125	0.8	1	TO-220		LD1117V30
3V LOW DROP	0 to 125	0.8	2	TO-220		LD1117V30C
3.3V LOW DROP	0 to 125	0.8	1	TO-220		LD1117V33
3.3V LOW DROP	0 to 125	0.8	2	TO-220		LD1117V33C
5V LOW DROP	0 to 125	0.8	1	TO-220		LD1117V50
5V LOW DROP	0 to 125	0.8	2	TO-220		LD1117V50C
2.5V L.D. /L. QUIE.	-40 to 125	0.1	3	SO-8		LK115D25
3V L.D. /L. QUIE.	-40 to 125	0.1	3	SO-8		LK115D30
3.3V L.D. /L. QUIE.	-40 to 125	0.1	3	SO-8		LK115D33
4V L.D. /L. QUIE.	-40 to 125	0.1	3	SO-8		LK115D40
4.75V L.D. /L. QUIE.	-40 to 125	0.1	3	SO-8		LK115D47
4.85V L.D. /L. QUIE.	-40 to 125	0.1	3	SO-8		LK115D48
5V L.D. /L. QUIE.	-40 to 125	0.1	3	SO-8		LK115D50
1.2V-37V ADJ.	-55 to 150	0.5	4	TO-39		LM117H
1.2V-37V ADJ.	-55 to 150	1.5	4	TO-3		LM117K
FIXED 5V	-55 to 150	3.0	4	TO-3		LM123K
1.2V-37V A. N.	-55 to 150	1.5	4	TO-39		LM137H
1.2V-37V A. N.	-55 to 150	1.5	4	TO-3		LM137K
1.2V-32V ADJ.	-55 to 150	5.0	4	TO-3		LM138K
1.2V-32V ADJ.	-55 to 150	3.0	4	TO-3		LM150K
1.2V-37V ADJ.	-25 to 150	0.5	4	TO-39		LM217H
1.2V-37V ADJ.	-25 to 150	1.5	4	TO-3		LM217K
1.2V-37V ADJ.	-25 to 150	0.1	4	SO-8		LM217LD
1.2V-37V ADJ.	-25 to 150	0.1	4	TO-92		LM217LZ
1.2V-37V ADJ.	-25 to 150	1.5	4	TO-220		LM217T
FIXED 5V	-25 to 150	3.0	4	TO-3		LM223K
1.2V-37V A. N.	-25 to 150	0.5	4	TO-39		LM237H
1.2V-37V A. N.	-25 to 150	1.5	4	TO-3		LM237K
1.2V-37V A. N.	-25 to 150	1.5	4	TO-220		LM237SP
1.2V-32V ADJ.	-25 to 150	5.0	4	TO-3		LM238K
1.2V-32V ADJ.	-25 to 150	3.0	4	TO-3		LM250K
1.2V-37V ADJ.	0 to 125	0.5	4	TO-39		LM317H
1.2V-37V ADJ.	0 to 125	1.5	4	TO-3		LM317K
1.2V-37V ADJ.	0 to 125	0.1	4	SO-8		LM317LD
1.2V-37V ADJ.	0 to 125	0.1	4	TO-92		LM317LZ
1.2V-37V ADJ.	0 to 125	0.5	4	DPAK		LM317MDT
1.2V-37V ADJ.	0 to 125	0.5	4	TO-220		LM317MT
1.2V-37V ADJ.	0 to 125	1.5	4	TO-220		LM317T
FIXED 5V	0 to 125	0.5	4	TO-92		LM323H
FIXED 5V	0 to 125	3.0	4	TO-3		LM323K
FIXED 5V	0 to 125	1.5	4	TO-220		LM323T
1.2V-37V A. N.	0 to 125	1.5	4	TO-39		LM337H
1.2V-37V A. N.	0 to 125	1.5	4	TO-3		LM337K
1.2V-37V A. N.	0 to 125	1.5	4	TO-220		LM337SP
1.2V-32V ADJ.	0 to 125	5.0	4	TO-3		LM338K
1.2V-32V ADJ.	0 to 150	3.0	4	TO-3		LM350K
3-37V ADJ.	0 to 125	3.0	4	SO-14		LM723ACD
3-37V ADJ.	0 to 125	0.15	4	SO-14		LM723CD
3-37V ADJ.	0 to 125	0.15	4	TO-100		LM723CH
3-37V ADJ.	0 to 125	0.15	4	Plastic Dil 14		LM723CN
3-37V ADJ.	-25 to 150	0.15	4	TO-100		LM723H

# SAMSUNG to ST

Vol. Reg. Description	Tj °C	Iout A	Tol. %	Package	SAMSUNG	ST
5V LOW DROP	-40 to 150	1.5	2	TO-220		L4940V5
8.5V LOW DROP	-40 to 150	1.5	2	TO-220		L4940V85
10V LOW DROP	-40 to 150	1.5	2	TO-220		L4940V10
12V LOW DROP	-40 to 150	1.5	2	TO-220		L4940V12
5V LOW DROP	-40 to 150	1.0	4	DPAK		L4941BDT
5V LOW DROP	-40 to 150	1.0	4	SOT-194		L4941BS
5V LOW DROP	-40 to 150	1.0	4	TO-220		L4941BV
5V LOW DROP	-40 to 150	1.0	4	SOT-82		L4941BX
FIXED 5V	-40 to 125	1.5	2	TO-220	LM140AK	L7805ABV
FIXED 5V	0 to 125	1.5	2	TO-220	LM340AT-5.0	L7805ACV
FIXED 5V	0 to 125	1.5	4	ISOWATT220		L7805CP
FIXED 5V	0 to 125	1.5	4	TO-3	LM340K -5.0	L7805CT
FIXED 5V	0 to 125	1.5	4	TO-220	LM7805CT	L7805CV
FIXED 5.2V	0 to 125	1.5	4	ISOWATT220		L7852CV
FIXED 6V	-40 to 125	1.5	2	TO-220	LM140AK-5.0	L7806ABV
FIXED 6V	0 to 125	1.5	2	TO-220	LM340AT-5.0	L7806ACV
FIXED 6V	0 to 125	1.5	4	ISOWATT220		L7806CP
FIXED 6V	0 to 125	1.5	4	TO-3		L7806CT
FIXED 6V	0 to 125	1.5	4	TO-220		L7806CV
FIXED 8V	-40 to 125	1.5	2	TO-220		L7808ABV
FIXED 8V	0 to 125	1.5	2	TO-220	LM340AT	L7808ACV
FIXED 8V	0 to 125	1.5	4	ISOWATT220		L7808CP
FIXED 8V	0 to 125	1.5	4	TO-3		L7808CT
FIXED 8V	0 to 125	1.5	4	TO-220		L7808CV
FIXED 8.5V	0 to 125	1.5	4	TO-3		L7885CT
FIXED 8.5V	0 to 125	1.5	4	TO-220		L7885CV
FIXED 9V	-40 to 125	1.5	2	TO-220		L7809ABV
FIXED 9V	0 to 125	1.5	2	TO-220	LM340AT	L7809ACV
FIXED 9V	0 to 125	1.5	4	ISOWATT220		L7809CP
FIXED 9V	0 to 125	1.5	4	TO-3		L7809CT
FIXED 9V	0 to 125	1.5	4	TO-220		L7809CV
FIXED 12V	-40 to 125	1.5	2	TO-220	LM140AK-12	L7812ABV
FIXED 12V	0 to 125	1.5	2	TO-220	LM340AT-12	L7812ACV
FIXED 12V	0 to 125	1.5	4	ISOWATT220		L7812CP
FIXED 12V	0 to 125	1.5	4	TO-3	LM340K-12	L7812CT
FIXED 12V	0 to 125	1.5	4	TO-220	LM7812CT	L7812CV
FIXED 15V	-40 to 125	1.5	2	TO-220	LM140AK-15	L7815ABV
FIXED 15V	0 to 125	1.5	2	TO-220	LM340AT-15	L7815ACV
FIXED 15V	0 to 125	1.5	4	ISOWATT220		L7815CP
FIXED 15V	0 to 125	1.5	4	TO-3	LM340K-15	L7815CT
FIXED 15V	0 to 125	1.5	4	TO-220	LM7815CT	L7815CV
FIXED 18V	-40 to 125	1.5	2	TO-220		L7818ABV
FIXED 18V	0 to 125	1.5	2	TO-220	LM340AT	L7818ACV
FIXED 18V	0 to 125	1.5	4	ISOWATT220		L7818CP
FIXED 18V	0 to 125	1.5	4	TO-3		L7818CT
FIXED 18V	0 to 125	1.5	4	TO-220	LM7818CT	L7818CV
FIXED 20V	-40 to 125	1.5	2	TO-220		L7820ABV
FIXED 20V	0 to 125	1.5	2	TO-220		L7820ACV
FIXED 20V	0 to 125	1.5	4	ISOWATT220		L7820CP
FIXED 20V	0 to 125	1.5	4	TO-220		L7820C-T
FIXED 20V	0 to 125	1.5	4	TO-220		L7820CV
FIXED 24V	-40 to 125	1.5	2	TO-220		L7824ABV
FIXED 24V	0 to 125	1.5	2	TO-220		L7824ACV
FIXED 24V	0 to 125	1.5	4	ISOWATT220		L7824CP
FIXED 24V	0 to 125	1.5	4	TO-3		L7824CT
FIXED 24V	0 to 125	1.5	4	TO-220	LM7824CT	L7824CV
FIXED 3.3V	0 to 125	0.1	4	SO-8		L78L33ACD
FIXED 3.3V	0 to 125	0.1	4	TO-92		L78L33ACZ
FIXED 5V	-40 to 125	0.1	4	SO-8		L78L05ABD
FIXED 5V	-40 to 125	0.1	4	TO-92		L78L05ABZ
FIXED 5V	0 to 125	0.1	4	SO-8	LM78L05ACM	L78L05ACD
FIXED 5V	0 to 125	0.1	4	TO-92	LM78L05ACZ	L78L05ACZ
FIXED 5V	0 to 125	0.1	8	SO-8		L78L05CD
FIXED 6V	-40 to 125	0.1	4	SO-8		L78L06ABD
FIXED 6V	-40 to 125	0.1	4	TO-92		L78L06ABZ
FIXED 6V	0 to 125	0.1	4	SO-8	LM78L06ACM	L78L06ACD
FIXED 6V	0 to 125	0.1	4	TO-92	LM87L06ACZ	L78L06ACZ

# SAMSUNG to ST

Vol. Reg. Description	Tj °C	Iout A	Tol. %	Package	SAMSUNG	ST
FIXED 6V	0 to 125	0.1	8	SO-8		L78L06CD
FIXED 8V	-40 to 125	0.1	4	SO-8		L78L08ABD
FIXED 8V	-40 to 125	0.1	4	TO-92		L78L08ABZ
FIXED 8V	0 to 125	0.1	4	SO-8	LM78L08ACM	L78L08ACD
FIXED 8V	0 to 125	0.1	4	TO-92	LM78L08ACZ	L78L08ACZ
FIXED 8V	0 to 125	0.1	8	SO-8		L78L08CD
FIXED 9V	-40 to 125	0.1	4	SO-8		L78L09ABD
FIXED 9V	-40 to 125	0.1	4	TO-92		L78L09ABZ
FIXED 9V	0 to 125	0.1	4	SO-8	LM78L09ACM	L78L09ACD
FIXED 9V	0 to 125	0.1	4	TO-92	LM78L09ACZ	L78L09ACZ
FIXED 9V	0 to 125	0.1	8	SO-8		L78L09CD
FIXED 12V	-40 to 125	0.1	4	SO-8		L78L12ABD
FIXED 12V	-40 to 125	0.1	4	TO-92		L78L12ABZ
FIXED 12V	0 to 125	0.1	4	SO-8	LM78L12ACM	L78L12ACD
FIXED 12V	0 to 125	0.1	4	TO-92	LM78L12ACZ	L78L12ACZ
FIXED 12V	0 to 125	0.1	8	SO-8		L78L12CD
FIXED 15V	-40 to 125	0.1	4	SO-8		L78L15ABD
FIXED 15V	-40 to 125	0.1	4	TO-92		L78L15ABZ
FIXED 15V	0 to 125	0.1	4	SO-8		L78L15ACD
FIXED 15V	0 to 125	0.1	4	TO-92	LM78L15ACM	L78L15ACZ
FIXED 15V	0 to 125	0.1	8	SO-8	LM78L15ACZ	L78L15CD
FIXED 18V	-40 to 125	0.1	4	SO-8		L78L18ABD
FIXED 18V	-40 to 125	0.1	4	TO-92		L78L18ABZ
FIXED 18V	0 to 125	0.1	4	SO-8	LM78L18ACM	L78L18ACD
FIXED 18V	0 to 125	0.1	4	TO-92	LM78L18ACZ	L78L18ACZ
FIXED 18V	0 to 125	0.1	8	SO-8		L78L18CD
FIXED 24V	-40 to 125	0.1	4	SO-8		L78L24ABD
FIXED 24V	-40 to 125	0.1	4	TO-92		L78L24ABZ
FIXED 24V	0 to 125	0.1	4	SO-8	LM78L24ACM	L78L24ACD
FIXED 24V	0 to 125	0.1	4	TO-92	LM78L24ACZ	L78L24ACZ
FIXED 24V	0 to 125	0.1	8	SO-8		L78L24CD
FIXED 24V	0 to 125	0.1	8	TO-92		L78L24CZ
FIXED 5V	-40 to 125	0.5	2	DPAK		L78M05ABDT
FIXED 5V	-40 to 125	0.5	2	SOT-194		L78M05ABS
FIXED 5V	-40 to 125	0.5	2	TO-220	LM341T-0.5	L78M05ABV
FIXED 5V	-40 to 125	0.5	2	SOT-82		L78M05ABX
FIXED 5V	0 to 125	0.5	2	DPAK		L78M05ACDT
FIXED 5V	0 to 125	0.5	2	SOT-194		L78M05ACS
FIXED 5V	0 to 125	0.5	4	DPAK		L78M05CDT
FIXED 5V	0 to 125	0.5	4	ISOWATT220		L78M05CP
FIXED 5V	0 to 125	0.5	4	SOT-194		L78M05CS
FIXED 5V	0 to 125	0.5	4	TO-220	L78M05CT	L78M05CV
FIXED 5V	0 to 125	0.5	4	SOT-82		L78M05CX
FIXED 6V	-40 to 125	0.5	2	DPAK		L78M06ABDT
FIXED 6V	-40 to 125	0.5	2	SOT-194		L78M06ABS
FIXED 6V	-40 to 125	0.5	2	TO-220		L78M06ABV
FIXED 6V	0 to 125	0.5	2	DPAK		L78M06ACDT
FIXED 6V	0 to 125	0.5	4	DPAK		L78M06CDT
FIXED 6V	0 to 125	0.5	4	ISOWATT220		L78M06CP
FIXED 6V	0 to 125	0.5	4	SOT-194		L78M06CS
FIXED 6V	0 to 125	0.5	4	TO-220	LM78M06CT	L78M06CV
FIXED 6V	0 to 125	0.5	4	SOT-82		L78M06CX
FIXED 8V	-40 to 125	0.5	2	DPAK		L78M08ABDT
FIXED 8V	-40 to 125	0.5	2	SOT-194		L78M08ABS
FIXED 8V	-40 to 125	0.5	2	TO-220		L78M08ABV
FIXED 8V	0 to 125	0.5	2	DPAK		L78M08ACDT
FIXED 8V	0 to 125	0.5	4	DPAK		L78M08CDT
FIXED 8V	0 to 125	0.5	4	ISOWATT220		L78M08CP
FIXED 8V	0 to 125	0.5	4	SOT-194		L78M08CS
FIXED 8V	0 to 125	0.5	4	TO-220	LM78M08CT	L78M08CV
FIXED 8V	0 to 125	0.5	4	SOT-82		L78M08CX
FIXED 9V	-40 to 125	0.5	2	DPAK		L78M09ABDT
FIXED 9V	-40 to 125	0.5	2	TO-220	LM140AK	L78M09ABV
FIXED 9V	0 to 125	0.5	2	DPAK		L78M09ACDT
FIXED 9V	0 to 125	0.5	4	DPAK		L78M09CDT
FIXED 9V	0 to 125	0.5	4	ISOWATT220		L78M09CP
FIXED 9V	0 to 125	0.5	4	SOT-194		L78M09CS

# SAMSUNG to ST

Vol. Reg. Description	Tj °C	Iout A	Tol. %	Package	SAMSUNG	ST
FIXED 9V	0 to 125	0.5	4	TO-220		L78M09CV
FIXED 9V	0 to 125	0.5	4	SOT-82		L78M09CX
FIXED 10V	-40 to 125	0.5	2	DPAK		L78M10ABDT
FIXED 10V	-40 to 125	0.5	2	TO-220		L78M10ABV
FIXED 10V	0 to 125	0.5	2	DPAK		L78M10ACDT
FIXED 10V	0 to 125	0.5	4	DPAK		L78M10CDT
FIXED 10V	0 to 125	0.5	4	ISOWATT220		L78M10CP
FIXED 10V	0 to 125	0.5	4	SOT-194		L78M10CS
FIXED 10V	0 to 125	0.5	4	TO-220	LM78M10CT	L78M10CV
FIXED 10V	0 to 125	0.5	4	SOT-82		L78M10CX
FIXED 12V	-40 to 125	0.5	2	DPAK		L78M12ABDT
FIXED 12V	-40 to 125	0.5	2	SOT-194		L78M12ABS
FIXED 12V	-40 to 125	0.5	2	TO-220	LM341T-12	L78M12ABV
FIXED 12V	0 to 125	0.5	2	DPAK		L78M12ACDT
FIXED 12V	0 to 125	0.5	4	DPAK		L78M12CDT
FIXED 12V	0 to 125	0.5	4	ISOWATT220		L78M12CP
FIXED 12V	0 to 125	0.5	4	SOT-194		L78M12CS
FIXED 12V	0 to 125	0.5	4	TO-220	LM78M12CT	L78M12CV
FIXED 12V	0 to 125	0.5	4	SOT-82		L78M12CX
FIXED 15V	-40 to 125	0.5	2	DPAK		L78M15ABDT
FIXED 15V	-40 to 125	0.5	2	TO-220	LM341T-15	L78M15ABV
FIXED 15V	0 to 125	0.5	2	DPAK		L78M15ACDT
FIXED 15V	0 to 125	0.5	4	DPAK		L78M15CDT
FIXED 15V	0 to 125	0.5	4	ISOWATT220		L78M15CP
FIXED 15V	0 to 125	0.5	4	SOT-194		L78M15CS
FIXED 15V	0 to 125	0.5	4	TO-220	LM78M15CT	L78M15CV
FIXED 15V	0 to 125	0.5	4	SOT-82		L78M15CX
FIXED 18V	-40 to 125	0.5	2	DPAK		L78M18ABDT
FIXED 18V	-40 to 125	0.5	2	TO-220	LM341T-18	L78M18ABV
FIXED 18V	0 to 125	0.5	2	DPAK		L78M18ACDT
FIXED 18V	0 to 125	0.5	4	DPAK		L78M18CDT
FIXED 18V	0 to 125	0.5	4	ISOWATT220		L78M18CP
FIXED 18V	0 to 125	0.5	4	SOT-194		L78M18CS
FIXED 18V	0 to 125	0.5	4	TO-220	LM78M18CT	L78M18CV
FIXED 18V	0 to 125	0.5	4	SOT-82		L78M18CX
FIXED 20V	-40 to 125	0.5	2	DPAK		L78M20ABDT
FIXED 20V	-40 to 125	0.5	2	TO-220		L78M20ABV
FIXED 20V	0 to 125	0.5	2	DPAK		L78M20ACDT
FIXED 20V	0 to 125	0.5	4	DPAK		L78M20CDT
FIXED 20V	0 to 125	0.5	4	ISOWATT220		L78M20CP
FIXED 20V	0 to 125	0.5	4	SOT-194		L78M20CS
FIXED 20V	0 to 125	0.5	4	TO-220	LM78M20CT	L78M20CV
FIXED 20V	0 to 125	0.5	4	SOT-82		L78M20CX
FIXED 24V	-40 to 125	0.5	2	DPAK		L78M24ABDT
FIXED 24V	-40 to 125	0.5	2	TO-220		L78M24ABV
FIXED 24V	0 to 125	0.5	2	DPAK		L78M24ACDT
FIXED 24V	0 to 125	0.5	4	DPAK		L78M24CDT
FIXED 24V	0 to 125	0.5	4	ISOWATT220		L78M24CP
FIXED 24V	0 to 125	0.5	4	SOT-194		L78M24CS
FIXED 24V	0 to 125	0.5	4	TO-220	LM78M24CT	L78M24CV
FIXED 24V	0 to 125	0.5	4	SOT-82		L78M24CX
FIXED 5V	0 to 150	2.0	4	TO-3		L78S05CT
FIXED 5V	0 to 150	2.0	4	TO-220		L78S05CV
FIXED 7.5V	0 to 150	2.0	4	TO-3		L78S75CT
FIXED 7.5V	0 to 150	2.0	4	TO-220		L78S75CV
FIXED 9V	0 to 150	2.0	4	TO-3		L78S09CT
FIXED 9V	0 to 150	2.0	4	TO-220		L78S09CV
FIXED 10V	0 to 150	2.0	4	TO-3		L78S10CT
FIXED 10V	0 to 150	2.0	4	TO-220		L78S10CV
FIXED 12V	0 to 150	2.0	4	TO-3		L78S12CT
FIXED 12V	0 to 150	2.0	4	TO-220		L78S12CV
FIXED 15V	0 to 150	2.0	4	TO-3		L78S15CT
FIXED 15V	0 to 150	2.0	4	TO-220		L78S15CV
FIXED 18V	0 to 150	2.0	4	TO-3		L78S18CT
FIXED 18V	0 to 150	2.0	4	TO-220		L78S18CV
FIXED 24V	0 to 150	2.0	4	TO-3		L78S24CT
FIXED 24V	0 to 150	2.0	4	TO-220		L78S24CV

# SAMSUNG to ST

Vol. Reg. Description	Tj °C	Iout A	Tol. %	Package	SAMSUNG	ST
5V NEG. FIXED	0 to 125	1.5	2	TO-220	LM7905CT/LM320T-5.0	L7905ACV
5V NEG. FIXED	0 to 125	1.5	4	ISOWATT220		L7905CP
5V NEG. FIXED	0 to 150	1.5	4	TO-3	LM320K-5.0	L7905CT
5V NEG. FIXED	0 to 125	1.5	4	TO-220	LM7905CT	L7905CV
5.2V NEG.FIXED	0 to 125	1.5	2	TO-220		L7952ACV
5.2V NEG.FIXED	0 to 150	1.5	4	TO-3		L7952CT
5.2V NEG.FIXED	0 to 125	1.5	4	TO-220		L7952CV
6V NEG. FIXED	0 to 150	1.5	4	TO-3		L7906CT
6V NEG. FIXED	0 to 125	1.5	4	TO-220		L7906CV
8V NEG. FIXED	0 to 125	1.5	2	TO-220		L7908ACV
8V NEG. FIXED	0 to 150	1.5	4	TO-3		L7908CT
8V NEG. FIXED	0 to 125	1.5	4	TO-220		L7908CV
12V NEG. FIXED	0 to 125	1.5	2	TO-220	LM7912CT/LM320T-12	L7912ACV
12V NEG. FIXED	0 to 125	1.5	4	ISOWATT220		L7912CP
12V NEG. FIXED	0 to 150	1.5	4	TO-3	LM320K-12	L7912CT
12V NEG. FIXED	0 to 125	1.5	4	TO-220	LM7912CT	L7912CV
15V NEG. FIXED	0 to 125	1.5	2	TO-220	LM7915CT/LM320T-15	L7915ACV
15V NEG. FIXED	0 to 150	1.5	4	TO-3	LM320K-15	L7915CT
15V NEG. FIXED	0 to 125	1.5	4	TO-220	LM7915CT	L7915CV
18V NEG. FIXED	0 to 125	1.5	2	TO-220		L7918ACV
18V NEG. FIXED	0 to 150	1.5	4	TO-3		L7918CT
18V NEG. FIXED	0 to 125	1.5	4	TO-220		L7918CV
20V NEG. FIXED	0 to 125	1.5	2	TO-220		L7920ACV
20V NEG. FIXED	0 to 150	1.5	4	TO-3		L7920CT
20V NEG. FIXED	0 to 125	1.5	4	TO-220		L7920CV
22V NEG. FIXED	0 to 150	1.5	4	TO-3		L7922CT
22V NEG. FIXED	0 to 125	1.5	4	TO-220		L7922CV
24V NEG. FIXED	0 to 125	1.5	2	TO-220		L7924ACV
24V NEG. FIXED	0 to 150	1.5	4	TO-3		L7924CT
24V NEG. FIXED	0 to 125	1.5	4	TO-220		L7924CV
5V NEG. FIXED	-40 to 125	0.1	4	SO-8		L79L05ABD
5V NEG. FIXED	-40 to 125	0.1	4	TO-92		L79L05ABZ
5V NEG. FIXED	0 to 125	0.1	4	SO-8	LM79L05ACM	L79L05ACD
5V NEG. FIXED	0 to 125	0.1	4	TO-92	LM79L05ACZ	L79L05ACZ
5V NEG. FIXED	0 to 125	0.1	8	SO-8		L79L05CD
6V NEG.FIXED	-40 to 125	0.1	4	SO-8		L79L06ABD
6V NEG.FIXED	-40 to 125	0.1	4	TO-92		L679L06ABZ
6V NEG.FIXED	0 to 125	0.1	4	SO-8		L79L06ACD
6V NEG.FIXED	0 to 125	0.1	4	TO-92		L79L06ACZ
6V NEG.FIXED	0 to 125	0.1	8	SO-8		L79L06CD
8V NEG.FIXED	-40 to 125	0.1	4	SO-8		L79L08ABD
8V NEG.FIXED	-40 to 125	0.1	4	TO-92		L79L08ABZ
8V NEG.FIXED	0 to 125	0.1	4	SO-8		L79L08ACD
8V NEG.FIXED	0 to 125	0.1	4	TO-92		L79L08ACZ
8V NEG.FIXED	0 to 125	0.1	8	SO-8		L79L08CD
9V NEG.FIXED	-40 to 125	0.1	4	SO-8		L79L09ABD
9V NEG.FIXED	-40 to 125	0.1	4	TO 92		L79L09ABZ
9V NEG.FIXED	0 to 125	0.1	4	SO-8		L79L09ACD
9V NEG.FIXED	0 to 125	0.1	4	TO-92		L79L09ACZ
9V NEG.FIXED	0 to 125	0.1	8	SO-8		L79L09CD
12V NEG.FIXED	-40 to 125	0.1	4	SO-8		L79L12ABD
12V NEG.FIXED	-40 to 125	0.1	4	TO-92		L79L12ABZ
12V NEG.FIXED	0 to 125	0.1	4	SO-8	LM79L12ACM	L79L12ACD
12V NEG.FIXED	0 to 125	0.1	4	TO-92	LM79L12ACZ	L79L12ACZ
12V NEG.FIXED	0 to 125	0.1	8	SO-8		L79L12CD
15V NEG.FIXED	-40 to 125	0.1	4	SO-8		L79L15ABD
15V NEG.FIXED	-40 to 125	0.1	4	TO-92		L79L15ABZ
15V NEG.FIXED	0 to 125	0.1	4	SO-8	LM79L15ACM	L79L15ACD
15V NEG.FIXED	0 to 125	0.1	4	TO-92	LM79L15ACZ	L79L15ACZ
15V NEG.FIXED	0 to 125	0.1	8	SO-8		L79L15CD
2.5V LOW DROP	0 to 125	0.8	1	DPAK		LD1117DT25
2.5V LOW DROP	0 to 125	0.8	2	DPAK		LD1117DT25C
2.85V LOW DROP	0 to 125	0.8	1	DPAK		LD1117DT285
2.85V LOW DROP	0 to 125	0.8	2	DPAK		LD1117DT285C
3V LOW DROP	0 to 125	0.8	1	DPAK		LD1117DT30
3V LOW DROP	0 to 125	0.8	2	DPAK		LD1117DT30C
3.3V LOW DROP	0 to 125	0.8	1	DPAK		LD1117DT33




# SAMSUNG to ST

Vol. Reg. Description	Tj °C	Iout A	Tol. %	Package	SAMSUNG	ST
3.3V LOW DROP	0 to 125	0.8	2	DPAK		LD1117DT33C
5V LOW DROP	0 to 125	0.8	1	DPAK		LD1117DT50
5V LOW DROP	0 to 125	0.8	2	DPAK		LD1117DT50C
2.5V LOW DROP	0 to 125	0.8	1	TO-220		LD1117V25
2.5V LOW DROP	0 to 125	0.8	2	TO-220		LD1117V25C
2.85V LOW DROP	0 to 125	0.8	1	TO-220		LD1117V285
2.85V LOW DROP	0 to 125	0.8	2	TO-220		LD1117V285C
3V LOW DROP	0 to 125	0.8	1	TO-220		LD1117V30
3V LOW DROP	0 to 125	0.8	2	TO-220		LD1117V30C
3.3V LOW DROP	0 to 125	0.8	1	TO-220		LD1117V33
3.3V LOW DROP	0 to 125	0.8	2	TO-220		LD1117V33C
5V LOW DROP	0 to 125	0.8	1	TO-220		LD1117V50
5V LOW DROP	0 to 125	0.8	2	TO-220		LD1117V50C
2.5V L. D./L. QUIE.	-40 to 125	0.1	3	SO-8		LK115D25
3V L. D./L. QUIE.	-40 to 125	0.1	3	SO-8		LK115D30
3.3V L. D./L. QUIE.	-40 to 125	0.1	3	SO-8		LK115D33
4V L. D./L. QUIE.	-40 to 125	0.1	3	SO-8		LK115D40
4.75V L. D./L. QUIE.	-40 to 125	0.1	3	SO-8		LK115D47
4.85V L. D./L. QUIE.	-40 to 125	0.1	3	SO-8		LK115D48
5V L. D./L. QUIE.	-40 to 125	0.1	3	SO-8		LK115D50
1.2V-37V ADJ.	-55 to 150	0.5	4	TO-39	LM117H	LM117H
1.2V-37V ADJ.	-55 to 150	1.5	4	TO-3	LM117K	LM117K
FIXED 5V	-55 to 150	3.0	4	TO-3	LM123K	LM123K
1.2V-37V A. N.	-55 to 150	1.5	4	TO-39	LM137H	LM137H
1.2V-37V A. N.	-55 to 150	1.5	4	TO-3	LM137K	LM137K
1.2V-32V ADJ.	-55 to 150	5.0	4	TO-3	LM138K	LM138K
1.2V-32V ADJ.	-55 to 150	3.0	4	TO-3	LM150K	LM150K
1.2V-37V ADJ.	-25 to 150	0.5	4	TO-39		LM217H
1.2V-37V ADJ.	-25 to 150	1.5	4	TO-3		LM217K
1.2V-37V ADJ.	-25 to 150	0.1	4	SO-8		LM217LD
1.2V-37V ADJ.	-25 to 150	0.1	4	TO-92		LM217LZ
1.2V-37V ADJ.	-25 to 150	1.5	4	TO-220	LM217T	LM217T
FIXED 5V	-25 to 150	3.0	4	TO-3		LM223K
1.2V-37V A. N.	-25 to 150	0.5	4	TO-39		LM237H
1.2V-37V A. N.	-25 to 150	1.5	4	TO-3		LM237K
1.2V-37V A. N.	-25 to 150	1.5	4	TO-220		LM237SP
1.2V-32V ADJ.	-25 to 150	5.0	4	TO-3		LM238K
1.2V-32V ADJ.	-25 to 150	3.0	4	TO-3		LM250K
1.2V-37V ADJ.	0 to 125	0.5	4	TO-39	LM317K	LM317H
1.2V-37V ADJ.	0 to 125	1.5	4	TO-3	LM317K	LM317K
1.2V-37V ADJ.	0 to 125	0.1	4	SO-8	LM317LM	LM317LD
1.2V-37V ADJ.	0 to 125	0.1	4	TO-92	LM317LZ	LM317LZ
1.2V-37V ADJ.	0 to 125	0.5	4	DPAK		LM317MDT
1.2V-37V ADJ.	0 to 125	0.5	4	TO-220	LM317T	LM317MT
1.2V-37V ADJ.	0 to 125	1.5	4	TO-220	LM317T	LM317T
FIXED 5V	0 to 125	0.5	4	TO-92		LM323H
FIXED 5V	0 to 125	3.0	4	TO-3	LM323K	LM323K
FIXED 5V	0 to 125	1.5	4	TO-220		LM323T
1.2V-37V A. N.	0 to 125	1.5	4	TO-39		LM337H
1.2V-37V A. N.	0 to 125	1.5	4	TO-3	LM337K	LM337K
1.2V-37V A. N.	0 to 125	1.5	4	TO-220	LM337T	LM337SP
1.2V-32V ADJ.	0 to 125	5.0	4	TO-3	LM338K	LM338K
1.2V-32V ADJ.	0 to 150	3.0	4	TO-3	LM350K	LM350K
3-37V ADJ.	0 to 125	3.0	4	SO-14		LM723ACD
3-37V ADJ.	0 to 125	0.15	4	SO-14		LM723CD
3-37V ADJ.	0 to 125	0.15	4	TO-100	LM723CH	LM723CH
3-37V ADJ.	0 to 125	0.15	4	Plastic Dil 14	LM723CN	LM723CN
3-37V ADJ.	-25 to 150	0.15	4	TO-100	LM723H	LM723H

# LINEAR TECHNOLOGY to ST

Vol. Reg. Description	Tj °C	Iout A	Tol. %	Package	LINEAR TECH.	ST
2.5V LOW DROP	0 to 125	0.8	1	DPAK		LD1117DT25
2.5V LOW DROP	0 to 125	0.8	2	DPAK		LD1117DT25C
2.85V LOW DROP	0 to 125	0.8	1	DPAK	LT1117CM-2.85	LD1117DT285
2.85V LOW DROP	0 to 125	0.8	2	DPAK	LT1117CM-2.85	LD1117DT285C
3V LOW DROP	0 to 125	0.8	1	DPAK		LD1117DT30
3V LOW DROP	0 to 125	0.8	2	DPAK		LD1117DT30C
3.3V LOW DROP	0 to 125	0.8	1	DPAK	LT1117CM-3.3	LD1117DT33
3.3V LOW DROP	0 to 125	0.8	2	DPAK	LT1117CM3.3	LD1117DT33C
5V LOW DROP	0 to 125	0.8	1	DPAK	LT1117CM-5	LD1117DT50
5V LOW DROP	0 to 125	0.8	2	DPAK	LT1117CM-5	LD1117DT50C
2.5V LOW DROP	0 to 125	0.8	1	TO-220		LD1117V25
2.5V LOW DROP	0 to 125	0.8	2	TO-220		LD1117V25C
2.85V LOW DROP	0 to 125	0.8	1	TO-220		LD1117V285
2.85V LOW DROP	0 to 125	0.8	2	TO-220		LD1117V285C
3V LOW DROP	0 to 125	0.8	1	TO-220		LD1117V30
3V LOW DROP	0 to 125	0.8	2	TO-220		LD1117V30C
3.3V LOW DROP	0 to 125	0.8	1	TO-220		LD1117V33
3.3V LOW DROP	0 to 125	0.8	2	TO-220		LD1117V33C
5V LOW DROP	0 to 125	0.8	1	TO-220		LD1117V50
5V LOW DROP	0 to 125	0.8	2	TO-220		LD1117V50C
2.5V L. D./L. QUIE.	-40 to 125	0.1	3	SO-8		LK115D25
3V L. D./L. QUIE.	-40 to 125	0.1	3	SO-8		LK115D30
3.3V L. D./L. QUIE.	-40 to 125	0.1	3	SO-8		LK115D33
4V L. D./L. QUIE.	-40 to 125	0.1	3	SO-8		LK115D40
4.75V L. D./L. QUIE.	-40 to 125	0.1	3	SO-8		LK115D47
4.85V L. D./L. QUIE.	-40 to 125	0.1	3	SO-8		LK115D48
5V L. D./L. QUIE.	-40 to 125	0.1	3	SO-8		LK115D50
1.2V-37V ADJ.	-55 to 150	0.5	4	TO-39	LM117H	LM117H
1.2V-37V ADJ.	-55 to 150	1.5	4	TO-3	LM117K	LM117K
FIXED 5V	-55 to 150	3.0	4	TO-3	LM123K	LM123K
1.2V-37V A. N.	-55 to 150	1.5	4	TO-39	LM137H	LM137H
1.2V-37V A. N.	-55 to 150	1.5	4	TO-3	LM137K	LM137K
1.2V-32V ADJ.	-55 to 150	5.0	4	TO-3	LM138K	LM138K
1.2V-32V ADJ.	-55 to 150	3.0	4	TO-3	LM150K	LM150K
1.2V-37V ADJ.	-25 to 150	0.5	4	TO-39		LM217H
1.2V-37V ADJ.	-25 to 150	1.5	4	TO-3		LM217K
1.2V-37V ADJ.	-25 to 150	0.1	4	SO-8		LM217LD
1.2V-37V ADJ.	-25 to 150	0.1	4	TO-92		LM217LZ
1.2V-37V ADJ.	-25 to 150	1.5	4	TO-220		LM217T
FIXED 5V	-25 to 150	3.0	4	TO-3		LM223K
1.2V-37V A. N.	-25 to 150	0.5	4	TO-39		LM237H
1.2V-37V A. N.	-25 to 150	1.5	4	TO-3		LM237K
1.2V-37V A. N.	-25 to 150	1.5	4	TO-220		LM237SP
1.2V-32V ADJ.	-25 to 150	5.0	4	TO-3		LM238K
1.2V-32V ADJ.	-25 to 150	3.0	4	TO-3		LM250K
1.2V-37V ADJ.	0 to 125	0.5	4	TO-39	LM317H	LM317H
1.2V-37V ADJ.	0 to 125	1.5	4	TO-3	LM317K	LM317K
1.2V-37V ADJ.	0 to 125	0.1	4	SO-8		LM317LD
1.2V-37V ADJ.	0 to 125	0.1	4	TO-92		LM317LZ
1.2V-37V ADJ.	0 to 125	0.5	4	DPAK		LM317MDT
1.2V-37V ADJ.	0 to 125	0.5	4	TO-220		LM317MT
1.2V-37V ADJ.	0 to 125	1.5	4	TO-220	LM317T	LM317T
FIXED 5V	0 to 125	0.5	4	TO-92		LM323H
FIXED 5V	0 to 125	3.0	4	TO-3	LM323K	LM323K
FIXED 5V	0 to 125	1.5	4	TO-220	LM323T	LM323T
1.2V-37V ADJ.NEG.	0 to 125	1.5	4	TO-39	LM337H	LM337H
1.2V-37V ADJ.NEG.	0 to 125	1.5	4	TO-3	LM337K	LM337K
1.2V-37V ADJ.NEG.	0 to 125	1.5	4	TO-220	LM337T	LM337SP
1.2V-32V ADJ.	0 to 125	5.0	4	TO-3	LM338K	LM338K
1.2V-32V ADJ.	0 to 150	3.0	4	TO-3	LM350K	LM350K
3-37V ADJ.	0 to 125	3.0	4	SO-14		LM723ACD
3-37V ADJ.	0 to 125	0.15	4	SO-14		LM723CD
3-37V ADJ.	0 to 125	0.15	4	TO-100		LM723CH
3-37V ADJ.	0 to 125	0.15	4	Plastic Dil 14		LM723CN
3-37V ADJ.	-25 to 150	0.15	4	TO-100		LM723H

# TOKO to ST

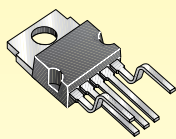
Vol. Reg. Description	Tj °C	Iout A	Tol. %	Package	TOKO	
2.5V L.D./L. QUIE.	-40 to 125	0.1	3	SO-8	TK11525	LK115D25
3V L.D./L. QUIE.	-40 to 125	0.1	3	SO-8	TK11530	LK115D30
3.3V L.D./L. QUIE.	-40 to 125	0.1	3	SO-8		LK115D33
4V L.D./L. QUIE.	-40 to 125	0.1	3	SO-8		LK115D40
4.75V L.D./L. QUIE.	-40 to 125	0.1	3	SO-8	TK11547	LK115D47
4.85V L.D./L. QUIE.	-40 to 125	0.1	3	SO-8		LK115D48
5V L.D./L. QUIE.	-40 to 125	0.1	3	SO-8	TK11550	LK115D50

# VOLTAGE REGULATORS

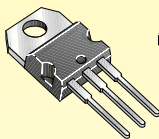
## New Devices

Type	Description	Packages
LE00AB/C	VERY LOW DROP	SO-8, TO-92
L4931	VERY LOW DROP	TO-220, SO-8, PPAK, DPAK
LF00AB/C	VERY LOW DROP	PENTAWATT, ISOWATT220 PPAK, DPAK, TO-92
KF00	VERY LOW DROP	SO-8, DPAK
LPR30	LOW DROP DRIVE	DIP-8, SO-8
ST662A	DC-DC CONVERTER	DIP-8, SO-8
ST755	DC-DC CONVERTER	DIP-8, SO-8
MC34063	DC-DC CONVERTER	DIP-8, SO-8

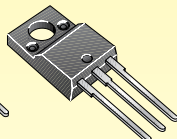
## Package Range



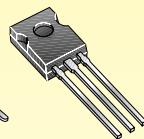
PENTAWATT



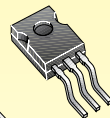
TO-220



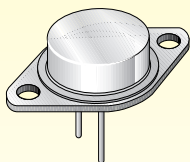
ISOWATT220



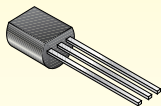
SOT-82



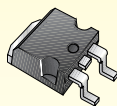
SOT-194



TO-3



TO-92



D2PAK



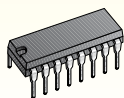
DPAK



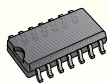
PPAK



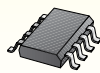
DIP-8



DIP-16



SO-14



SO-8



SOT-223

PRINTED IN ITALY EXPRESS INSERT

<http://www.st.com/>

 **SGS-THOMSON**  
MICROELECTRONICS

Recycled



Chlorine Free Paper