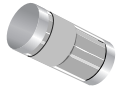
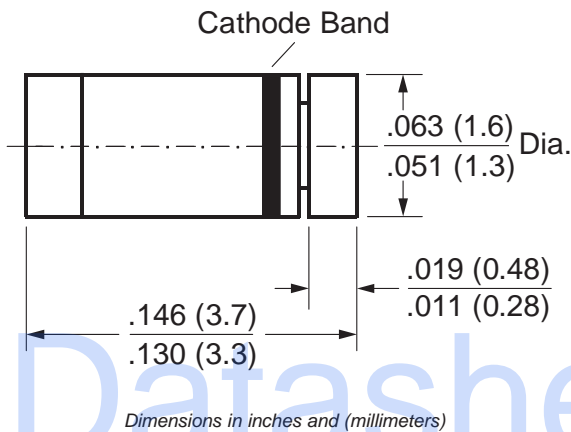


Small-Signal Diode

Reverse Voltage 50V
 Forward Current 200mA



MiniMELF (SOD-80C)



Features

- Silicon Epitaxial Planar Diodes
- For general purpose and switching
- This diode is also available in other case styles including the DO-35 case with the type designation 1N4150 and the SOD-123 case with the type designation 1N4150W

Mechanical Data

Case: MiniMELF Glass Case (SOD-80C)

Weight: approx. 0.05g

Cathode Band Color: Black

Packaging Codes/Options:

F4/10K per 13" reel (8mm tape), 50K/box

Maximum Ratings and Thermal Characteristics (T_A = 25°C unless otherwise noted)

Parameter	Symbol	Limit	Unit
Peak Reverse Voltage	V _{RM}	50	V
Maximum Average Rectified Current	I _{F(AV)}	200	mA
Maximum Power Dissipation at T _{amb} = 25°C	P _{tot}	500	mW
Maximum Junction Temperature	T _j	200	°C

Electrical Characteristics (T_A = 25°C unless otherwise noted)

Parameter	Symbol	Limit	Unit
Maximum Forward Voltage Drop at I _F = 200mA	V _F	1.15	V
Maximum Reverse Current at V _R = 50V	I _R	100	nA
Maximum Reverse Recovery Time -55 to 150 at I _F = I _R = 10 to 200mA, to 0.1I _F	t _{rr}	4.0	ns